

Historic, archived document

Do not assume content reflects current scientific knowledge, policies, or practices.

Safe Arrival
Guaranteed

Our New Guide to Rose Culture

New Low Prices
We Pay Postage

NOW YOU
CAN HAVE

Famous

DINGEE ROSES

for Planting
Spring Summer
and Fall

E. G. HILL

Magnificent new hardy, ever-blooming bush rose of world-wide renown. Considered the greatest of all dark crimson roses. Enormous flowers. Exquisite buds. Delicious fragrance. Hardy. Always in bloom. Details inside.

OUR 86th
YEAR

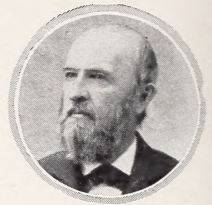
THE DINGEE & CONARD CO.

Established 1850 WEST GROVE, PA, Chas. Dingee, Founder
OLDEST ROSE GROWERS IN AMERICA

Sensational Low
Prices for 2 year
Roses Now



**"Dingee Roses, scientifically grown
for all-year around planting. High
Quality. Low Prices. Postage paid.
Satisfaction Guaranteed."**



CHARLES DINGEE
Founder of
The Dingee & Conard Company

86 years ago Charles Dingee established the Harmony Grove Nursery here. Soon after Mr. Dingee founded this present company. We were the first in America to send roses by mail. Today we believe Dingee Roses to be the best and cheapest in price in America. The same family is carrying on. We assume if you are a stranger to us that you want the best that money can buy. Here you will find it and our prices this year are lower than they were last year. You take no risk in planting Dingee Roses. Please read the guarantee below. Our reputation for fair dealing for more than 75 years is your guarantee of entire satisfaction.

Dormant field grown Roses offered on pages 4, 5, 6, 7, 8, and 9 should be ordered early and planted early just as soon as the ground can be dug. Our famous own root roses are offered on page 10 to page 22 inclusive. They may be planted any time in the year; spring, summer and fall whenever it suits you and the ground is not frozen.

Come and see us. We are on route number 1 between Baltimore and Philadelphia. You are most cordially invited and will be thrice welcome. The trip will make a pleasant outing but if you can't come your order will have the same personal care and attention as if you were here in person.

THE DINGEE & CONARD COMPANY, WEST GROVE, PA.

Established 1850

The Oldest Rose Growers in America

Mrs. Charles Dingee, *President*

P. J. Lynch, *Treasurer*

J. D. Headley, *Sec. & Gen. Mgr.*

We Prepay All Shipping Charges — Please Read

TERMS

Our terms are cash with order. You can open an account or we will ship Parcel Post or Express, C. O. D. Kindly give bank reference. Money may be sent at our risk by Post Office Order, Express Money Order, Bank Draft, Personal Check. Money in Registered Letter. Stamps accepted for less than \$1.00.

OUR GUARANTEE

We Guarantee Safe Arrival of all Goods in U. S. A. proper. Goods must be satisfactory to you, and if they are not it is your privilege to have them replaced, free of charge, or your money refunded upon request, provided you advise us of either wish within 10 days after shipment reaches you. This is a plain, understandable guarantee for your protection and we invite you to take advantage of it if necessary.

Any complaint of whatever character, must be made within 10 days after receipt of shipment. Otherwise, if the goods are delivered in satisfactory condition, our responsibility ceases.

All mistakes cheerfully corrected. If a certain variety runs short, we reserve the right to substitute another of same color and equal, if not better, value unless instructed to the contrary. We strive to have all plants true to name but we do not guarantee it.

INSTRUCTIONS FOR ORDERING

Please Observe Carefully—When ordering, please use the order sheet in this book. Simply fill up the blanks, giving the number and name of the varieties wanted, with size and price; we will understand.

Order Early—Many of our customers order early, and the plants are set aside; the earlier you order the better. We will book for delivery whenever you direct or at the time we consider proper to plant such stock ordered if so directed.

Canadian Customers—Canadian laws permit sending Roses or Shrubs into Canada at any time, but a permit must be secured from the Secretary of the Destructive Insect and Pest Advisory Board, Department of Agriculture, Ottawa. Owing to the rate of postage on Canadian orders we must request an additional 20 per cent to cover postage.

Foreign Orders—Twenty-five per cent must be added to total cost of orders going outside the United States proper to pay extra cost of packing and postage. To most foreign countries we ship by parcel post with postage always prepaid.

CAUTION—We have no connection with any other firm in West Grove or elsewhere. We are the original rose-growing firm, established here 86 years ago, still doing business at the same location—the pioneer rose growers of America.

The title of our catalog for 60 years has been, "OUR NEW GUIDE TO ROSE CULTURE." We are compelled to sound a warning that this title has been copied in part by others, especially the word "GUIDE." The reason is obvious and our friends will not be confused. This is the original "NEW GUIDE TO ROSE CULTURE," and has been issued annually under that title for more than 60 years. Our friends will kindly note this fact to avoid confusion. We assume that they will want, as always, these famous "Dingee Roses."

READ HOW OUR ROSES GROW AND BLOOM FOR OTHERS

ORCHIDS FROM OUR FRIENDS! Thousands of beautiful letters of praise for our goods come from friends throughout the entire world. What makes them all the more appreciated is that they are written to us voluntarily. It is most gratifying to have them and it is the "proof of the pudding." 86 years of continuous business life is your guarantee of perfect satisfaction and untold pleasure in planting "Dingee Roses."

Idaho—About 32 years ago this spring I ordered several Rose bushes which lived and bloomed year after year for the last 32 years, and still thrifty and blooming notwithstanding they have been moved several times from place to place as I always took my Rose bushes when I moved.—Mrs. A. D., Caldwell.

North Carolina—Kindly send me your book on Rose Culture. My father bought Roses of you 50 years ago. Some of them are still living at my old home near Mt. Olive.—Mrs. A. J. B., Clinton.

Indiana—I should be pleased to have your Rose Guide. I recall distinctly that as a little child my father used to buy his Roses from you and in the yard are still to be found Gen. Jacqueminot, Paul Neyron, Magna Charta, Ulrich Bruner and two or three others whose names I do not remember. The above mentioned plants are probably all of 50 years old.—Miss H. S., Aurora.

Michigan—Kindly send me your 1935 Rose Catalog. It might interest you to know that I ordered Roses from you some 40 years ago and found them very fine. Up in the cold North Dakota.—J. S. J., Goodells.

New York—Will you send me your Rose Catalog. I bought fifty Roses of you 32 years ago. Today there are thirty-six of them alive and in bloom in splendid condition. I consider this quite a good record.—C. W. M., New Baltimore.

Kansas—I have growing and blooming in my garden every summer three Roses which I bought from you 50 years ago last summer. I do not remember the names.—Mrs. L. N. R., Morrill.

HOW TO GROW DINGEE ROSES

Dig the soil about 15 to 20 inches deep. Spade in well rotted cow manure if possible. Use other manures very careful. Bone Meal is good. Set the plants well down into the soil. Water thoroughly to the bottom of the roots when planted. Don't keep plants wet. Water only when they need it. The best winter protection is to throw up plenty of earth around the plants, putting straw or other coarse litter on top and around the bushes. If you desire further information write us enclosing a stamped envelope for reply which will be cheerfully given.

WHAT PRICE ROSE PLANTS?

There are different kinds of rose plants sold at all kinds of prices. Department stores, hardware stores even furniture stores may be found selling roses in the spring of the year. In many cases rose plants are sold that have been forced for cut flowers. They have served their purpose but they are being passed on now for further work at very low prices. It used to be they were thrown on the dump. Sometimes these plants will give very fair results, but they are not the kind of plants that can be depended upon because they are exhausted. They have been grown under terrific pressure for the beautiful flowers they have produced and the grower naturally keeps them as long as there is any profit attached to them.

We don't grow cut flowers. Our plants have all the energy and root action stored up for *your* use and pleasure. They are grown cold in the winter just above freezing to give them a good rest and when planted out in the spring will literally burst into bloom. We prepare the root action which is the motor of the plant and you are paying for that kind of skilled preparation. If you want roses to which there will be no headaches attached, that will give you magnificent results if planted in ordinary good garden soil, plant these Dingee *pot grown own root* rose plants any time after heavy frosts are over—plant them in June, July, August, if you want to even in September. Plant them whenever it suits you. We have them ready for planting every month in the year that the ground is not frozen. They are specially grown for amateurs and beginners.

TRI-GEN

Combined Spray Treatment

Fungicide—Insecticide—Plant Stimulant

In the past, Mildew and Black Spot have been most difficult to combat. However, these diseases are now easily controlled with the Tri-ogen Spray Treatment, which gives COMPLETE protection against all diseases and insect pests. It is easily applied and also acts as a plant stimulant—producing vigor in growth with resultant luxurious blooms, heretofore considered impossible.

PRICES

A. Small Kit (makes 16 quarts)	\$ 1.50
B. Medium Kit (makes 64 quarts)	4.00
C. Large Kit (makes 32 gallons)	6.00
D. Estate Kit (makes 128 gallons)	20.00

This Material Sent by Express Only

Remember you are doing business with the Oldest Mail Order Rose Growers in America.
That is your guarantee of Satisfaction.

AMAZING LOW PRICES For Immense 2 Year Old, Dormant, Field Grown, Hardy, Everblooming Roses. Guaranteed to Bloom This Year.

For Early
Spring Planting

Will Positively
Bloom This Year!

IMPORTANT

May 1st is the dead line. Field-grown roses, pages 4 to 9 inclusive, must be ordered before May 1st. If ordered after May 1st and you don't instruct otherwise, your order will be filled with pot - grown roses, our selection, to the full value of your remittance. This is your only notice.

Field-grown roses again ready to send out October 15th and from then on to May 1st, but none will be available from May 1st to October 15th, so kindly notice.

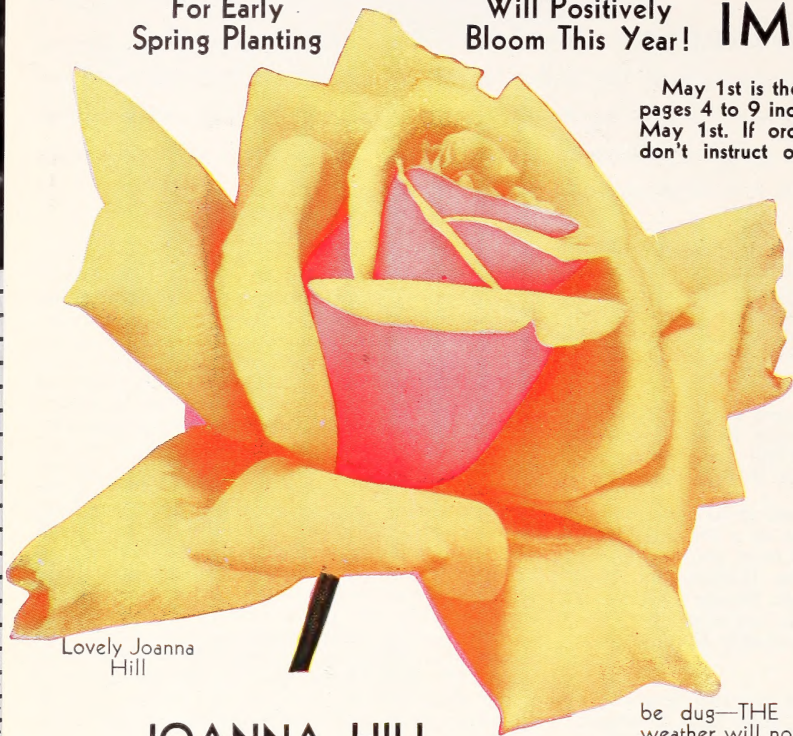
On these six pages, 4 to 9, is offered the finest collection of dormant field-grown budded roses in America, grown by us here in our own nursery. Will positively bloom this year and continuously. Guaranteed to be absolutely satisfactory or money back. No such prices elsewhere, no better plants, and indeed few as good. Then, why pay more?

Plant as soon as ground can be dug—THE EARLIER THE BETTER; cold weather will not hurt them. Not available after May 1st. In warm climates plant during our winter months. These are beautiful plants, strong, sturdy fibrous roots; low prices. Satisfaction guaranteed; shipping charges paid. Order liberally and early. These "De Luxe Dingee" Super Rose Plants are in limited supply. Order early, please. It's important. We Pay Postage.

Betty Uprichard—Copper-red buds opening to semi-double flowers of above average size, brilliant orange. Carmine on outer surface of petals shown light salmon on reflexes. Spicy fragrance. Strong grower, persistent bloomer.

Dame Edith Helen—The color is a brilliant yet soft clear pink. Full blooms delightfully sweet scented. Strong vigorous grower; shapely buds, long, pointed, opening full and double and almost a perfect flower. Most distinct and really magnificent.

Chas. K. Douglas—Splendid garden rose with great depth of petals and clear unfading color. Exceptionally good growth and there is an increasing demand for it. Fine pointed buds opening to large loosely formed flower of striking crimson-scarlet. Good foliage.



Lovely Joanna
Hill

JOANNA HILL

Superb new, strong growing, everblooming Hybrid Tea Bush Rose. Large, long, handsome buds, opening into a deep, extremely double bloom of a beautiful shade of deep yellow flushed with a coppery orange at base of petals. Wonderfully strong, upright grower, quickly making a magnificent bush, clean and healthy. Blooms produced in wonderful abundance throughout the growing season. Foliage heavy, clean and free from disease. Very hardy. **75c each.**

Etoile de France—Great favorite. Strong, upright bush, blooming constantly, producing large, massive, deep, full cup-formed flowers of clear red or velvety crimson.

Lady Ashtown—Satin buds and blooms of deep shining pink with yellow glow at base of petals. High center, very double and quite fragrant. Still a great rose.

Duchess of Wellington—The blooms are very large, full and perfectly formed, with high-pointed center. Very sweetly perfumed. The color, which is very novel, is a dainty, clear rose-madder.

Price. All Roses on this page except where noted 65c each, any 2 for \$1.25, any 6 for \$3.50; any 12 for \$6.50 postage paid. (Have your friends join you and secure 6 or 12 plants at these low quantity prices.)

AMAZING LOW PRICES For Immense 2 Year Old, Dormant, Field Grown, Hardy, Everblooming Roses. Guaranteed to Bloom This Year.



Fancy Colored Rose "Gaiety"

Etoile de Holland H.T. **The Greatest of all Red** **Roses**

Illustrated here. Conceded to be the world's finest red Rose. Half-open flower is almost perfect in form and develops into one of the most beautiful crimson roses known. Open flower a great big, artistically loose Rose of a brilliant scarlet crimson, with a delicious fragrance of Old Rose perfume. Makes a big handsome plant with leathery foliage, produces a wonderful crop of the handsome blooms. Enough cannot be said of it, and the demand always exceeds the supply.

Kootenay—The buds are long and pointed, and of exquisite form, opening to large rounded flowers full and double. Color creamy white, with shadings of flesh colors towards the center. Foliage heavy, unaffected by disease and little troubled with insects.

Briarcliff—One of the grandest roses it has been our privilege to grow. Bud beautifully formed, long and solid, opening into one of the finest blooms of enormous size. Very double, a brilliant rose pink. Splendid grower, free from diseases such as black spot and mildew. Flowers produced in a great abundance the entire season, on long, stiff stems, making it ideal for cutting.

GAIETY

One of the great fancy colored roses that seems to meet the approval of all rose enthusiasts. Exceptionally fine, healthy grower producing a big plant in a short time. Marvelous foliage shining as if varnished, free from black spot or mildew. Produces quantities of large, round camillea-like flowers of an extraordinary combination of pink, red, golden yellow, Indian red and brown. Colors vary with the season; seems to increase in beauty every day. Some claim it is the best of all their roses. We think it a great fancy-colored rose. **75c each.**

Miss Rowena Thom—Large buds open to full blooms of perfect form and enormous size, often measuring over 5 inches in diameter. Color deep rose-pink, yellow base to the petals which lights up the whole flower. Of vigorous growth, splendid foliage, blooms very freely. Delicious fragrance.

Editor McFarland. H.T.—Deep pink or a cherry red. One of the finest garden roses today. Perfectly formed blooms of 40 to 50 petals. Blooms delightfully fragrant.

Ami Quinard. H.T.—Black-lustered red. Blackish buds open to semi-double flowers of velvety crimson-maroon with a soft black luster; instead of fading, the petals get darker at the bloom ages. It has splendid old-time Rose fragrance. Strong, upright plant, matching the Radiances for vigor. This variety is improving, for it has several more petals than when first introduced and we now consider it one of our finest Roses.



"Etoile de Holland"

Price. All Roses on this page except where noted 65c each; any 2 for \$1.25; any 6 for \$3.50; any 12 for \$6.50, postage paid. (Have your friends join you and secure 6 or 12 plants at these low quantity prices.)

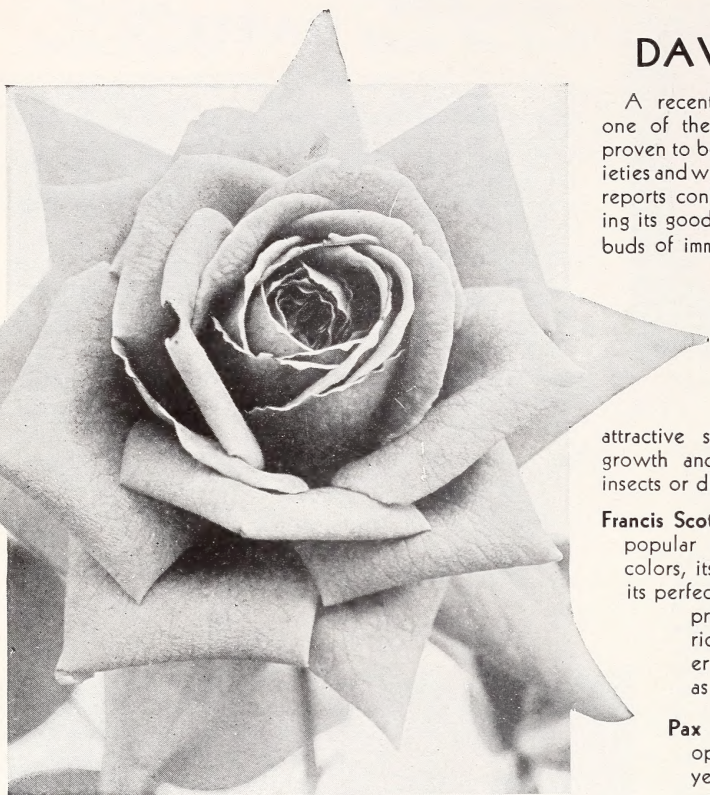
AMAZING LOW PRICES For Immense 2 Year Old, Dormant, Field Grown, Hardy, Everblooming Roses. Guaranteed to Bloom This Year.

DAVID O. DODD

A recent American introduction by one of the Leading Rosarians that has proven to be one of the best outdoor varieties and we have gotten many enthusiastic reports confirming our opinion concerning its good qualities. Large well formed buds of immense size opening into dazzling crimson double blooms that retain its color without fading and produced on long stems. Bush covered with these blooms the entire season thus making an attractive showing. Plant of vigorous growth and hardy anywhere. Free of insects or disease of any kind. **85c each.**

Francis Scott Key—It is by far the most popular red rose, for its glowing colors, its remarkable size, its fullness, its perfection of form make it a greatly prized variety. The color is a rich, glowing scarlet, with darker shadings, becoming darker as the flower ages.

Pax Labor—Orange gold bud opening into a very double pale yellow bloom, deepening toward the center. Vigorous erect grower and free bloomer.



The Great David O. Dodd Rose

RADIANCE

This is by far selected as one of the 12 best garden roses in existence, because of its vigorous, heavy growth, and great abundance of bloom. Easy to grow, requiring little attention, it is well adapted for amateurs everywhere. Color solid rose pink, with lighter tints and reflections. Long, heavy stems, large, beautiful buds which open slowly into globular, double flowers.

Red Radiance—Similar to Radiance, equally satisfactory. Large, globular, cupped blooms, of strong, clear red, with no trace of any other color. Vigorous grower, sending forth heavy canes, with healthy foliage. Very free blooming. Cannot be surpassed.

Director Rubio—Bud and flower very large semi-double and informally shaped, showy light red, and moderately fragrant. Foliage disease and insect resistant. Vigorous and bushy grower.

Maragaret McGredy—Large, ovoid buds of solid orange-vermilion opening into double cupped blooms. Foliage light green resistant to black spot and mildew. Free blooming and a vigorous grower. Hardy everywhere.

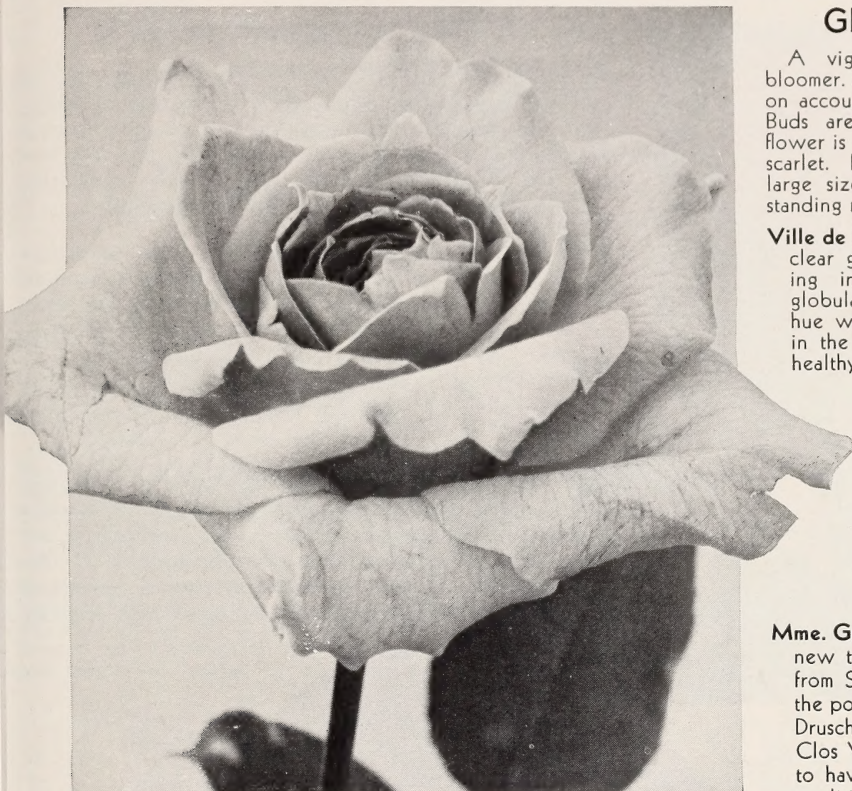
Kaiserin Augusta Victoria—Large buds of creamy white; the open flower delicate pure white, with a drop of lemon at the center, very large, fragrant.

Mrs. P. S. DuPont—The bud is long-pointed, rich reddish gold, almost orange in the depths of the petals, holding its color well after opening. Disease resistance foliage and compact bushy habit. Continuous bloomer.

Imperial Potentate—Shining rose pink, shaded lighter on reverse of petals. Vigorous grower of free flowering habit.

Price. All Roses on this page except where noted 65c each, any 2 for \$1.25, any 6 for \$3.50, any 12 for \$6.50, postage paid. (Have your friends join you and secure 6 or 12 plants at these low quantity prices.)

AMAZING LOW PRICES For Immense 2 Year Old, Dormant, Field Grown, Hardy, Everblooming Roses. Guaranteed to Bloom This Year.



A Gorgeous Newcomer "Grenoble"

GRENOBLE

A vigorous grower and bloomer. Splendid garden Rose on account of the long stems. Buds are crimson but open flower is a brilliant red, almost scarlet. Blooms double and large size. One of the outstanding red Roses.

Ville de Paris—Round buds of clear golden yellow opening into large handsome globular flowers of the same hue which retains its color in the open flower. Good healthy growth.

Mrs. E. P. Thom—Slender yellow buds and large well shaped blooms of bright canary yellow deepening towards center. Exceptionally vigorous grower.

Mme. Gregoire Staechelin—A new type of climbing Rose from Spain. Cross between the popular variety Frau Karl Druschki and Chateau de Clos Vougeot, and it seems to have inherited the good qualities of both. Long pointed buds of crimson at first, then as the blooms expand show splashes of carmine with pear pink inside.

F. J. Grootendorst—This is a new type of Rose which might be properly called a Rugosa Baby Rambler, it being a cross between Rugosa and the crimson Baby Rambler. Imagine a shrub-like Rugosa Rose covered with trusses of crimson Baby Rambler Roses and you will have a fair conception of this new hybrid variety. 2 year dormant plants only.

Paul's Scarlet Climber—Startling, vivid scarlet colors have won for this Rose well deserved recognition as the most attractive climber ever introduced. Produces a mass of bloom, and with its bright colors which are retained without fading for a long period, it makes the most brilliant display imaginable. Heavy disease resistant foliage; great freedom of bloom. Paul's Scarlet Climber, the winner of innumerable medals for excellence, is a Rose that no one should be without.

Bargain Offer of 10 Dormant "De Luxe" Roses \$5.50 Postpaid

Newest and best Everblooming Rose Bushes. Big, 2-year-old, Dormant Field-Grown Plants described elsewhere, as follows:

- | | | |
|------------------------|-----------------------------|--------------------|
| 1 Rev. F. Page-Roberts | 1 Etoile de France | 1 Mme. Butterfly |
| 1 Talisman | 1 Lady Ashtown | 1 Mrs. Henry Morse |
| 1 Pink Radiance | 1 Edel, greatest pure white | 1 Joanna Hill |
| 1 Red Radiance | | |

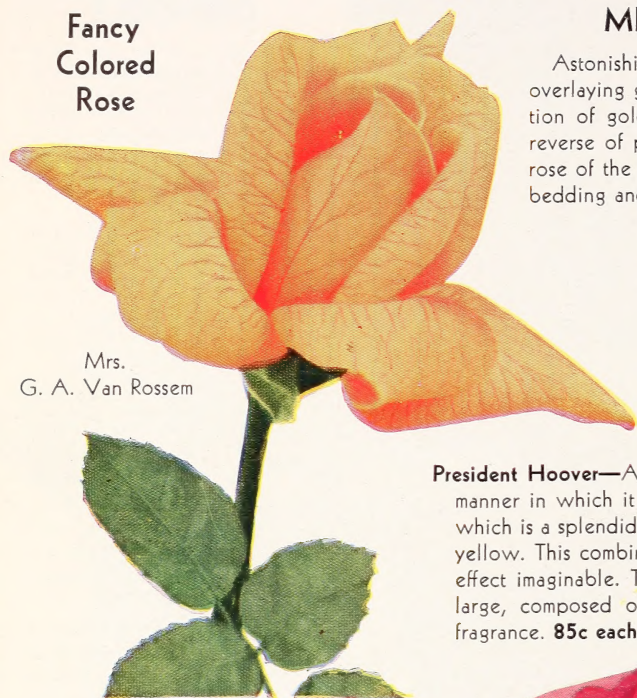
ORDER AS THE "DE LUXE" COLLECTION

Price. All Roses on this page except where noted 65c each, any 2 for \$1.25, any 6 for \$3.50, any 12 for \$6.50; postage paid. (Have your friends join you and secure 6 or 12 plants at these low quantity prices.)

PLANT THESE DORMANT ROSES EARLY IN SPRING

AMAZING LOW PRICES For Immense 2 Year Old, Dormant, Field Grown, Hardy, Everblooming Roses. Guaranteed to Bloom This Year.

**Fancy
Colored
Rose**



Mrs.
G. A. Van Rossem

MRS. G. A. VAN ROSSEM

Astonishing vivid color of a glowing orange or apricot overlaying golden yellow retaining a marvelous combination of golden salmon and light orange upon opening, reverse of petals generally bronze. An outstanding new rose of the highly colored varieties. It makes a wonderful bedding and cutting variety. **75c each postpaid.**

Mrs. Aaron Ward—The color, ranges from coppery orange in the opening bud, changing to a golden orange, and when the flower is fully open it is a lovely shade of pinkish fawn. Most vigorous in growth, every shoot producing a flower and clothed with dark, glossy green foliage, maroon on under side.

President Hoover—A glorious Rose, wonderfully free in the easy manner in which it grows and charming in its color arrangement which is a splendid combination of cerise-pink, flame, scarlet, and yellow. This combination of colors gives the most dazzling color effect imaginable. The buds are beautifully pointed; the flowers large, composed of broad, thick, heavy petals with moderate fragrance. **85c each.**

CHARLES P. KILHAM

One of the most popular roses on account of its pleasing color. Coral-red and orange. The long pointed buds open to fully double, finely formed blooms of coral red with an orange base. The plant is of average height, strong, sturdy, healthy bush producing flowers very freely and so thoroughly dependable that it is one of the best Garden roses today. Splendid for cutting.

Mrs. Henry Morse—Two contrasting tones of pink with an underlying yellow glow, double high centered. Plant tall and branching.

Mme. Butterfly—Buds a lovely shade of Indian ochre, yellow at base; opening flowers perfect in form, brilliant in color and of delicious fragrance.



Chas. P. Kilham

Price. All Roses on this page except where noted 65c each, any 2 for \$1.25, any 6 for \$3.50, any 12 for \$6.50, postage paid. (Have your friends join you and secure 6 or 12 plants at these low quantity prices.)

AMAZING LOW PRICES For Immense 2 Year Old, Dormant, Field Grown, Hardy, Everblooming Roses. Guaranteed to Bloom This Year.

TALISMAN

Sensational world famous new bush rose, with very large, double blooms produced in constant profusion. Indescribable colors—brilliant orange yellow with coppery and vivid red shades, blended into a combination seen in no other rose; fragrance exquisite, buds long and pointed, splendid for cutting, very hardy, free-blooming. One of the most sensational fancy colors now known. Especially fine in early summer and late fall.

Souv. de Georges Pernet—Brick-red buds, opening to an orange-pink bloom of immense size, very double. An unusually beautiful rose. Stocky, free blooming. Fragrant.

Syracuse—Tight crimson buds with large, full double bloom with deep crimson wavy petals. Free bloomer and a vigorous grower.

Golden Dawn—The ideal yellow garden Rose. The ovoid, lemon yellow bud is heavily splashed with crimson and develops into a well-formed sweetly scented, large, double, sunflower yellow flower that recalls the old favorite Marechal Niel. Vigorous and free flowering. **\$1.00 each.**

E. G. HILL

Illustrated on Front Cover

Introduced by the great American Rosarian E. G. Hill. The finest outdoor Roses in existence today. Strong upright grower, vigorous and healthy. Buds ideal, long and pointed on good stout stems, opening into a full double bloom of crimson scarlet retaining its color until the petals fall. Blooms continuously from early season until late fall.



Talisman



Rev. F. Page-Roberts

REV. F. PAGE - ROBERTS

Copper-red buds of good length of exquisite color and form, opening to rich Indian yellow inside with the outside petals strongly marked apricot and carmine. Rich tea fragrance. A glorified Duchess of Wellington but with more petals and deeper, richer color and better shape. Plants are of a strong growth, branching habit with healthy disease and insect resistant foliage. Each season its popularity increases and deservedly so. **75c each.**

The General — A

high priced leader among red roses because of its beauty of color, form and delightful fragrance. Bush dwarf but very vigorous and free blooming, being almost continuously a solid mass of blooms of blood red.

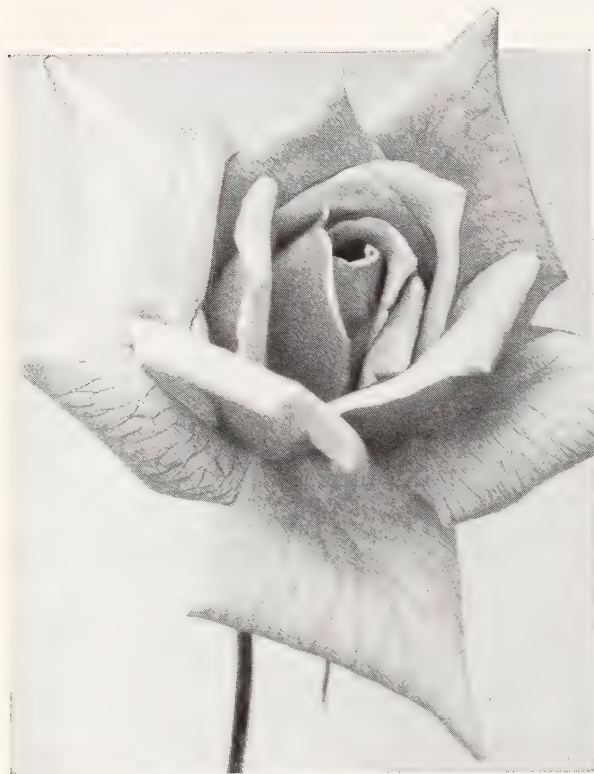
Price. All Roses on this page except where noted 65c each; any 2 for \$1.25; any 6 for \$3.50; any 12 for \$6.50 postage paid. (Have your friends join you and secure 6 or 12 plants at these low quantity prices.)

Any Two—2 year \$1.25
old Bushes below POST PAID

For a little more than former price for a single 2 year old Rose you may now get two big husky 2 year old plants for only \$1.25 except where noted.

“Dingee Potted Roses on Own Roots”

May be planted anytime, anywhere, when the ground is not frozen.



Our Great New Rose “Garden Gem”

GARDEN GEM

This great new bush rose we introduced after extensive trials, as the best, healthiest and most beautiful satiny-pink garden variety now known. For sale only by us. A marvelously strong, healthy grower under the most adverse conditions, thriving even in extreme heat—just a grand grower. We know of no rose that compares with it in absolute healthy growth and freedom of bloom. A magnificent bloomer, continuously bearing its beautiful, immense, deep, double satiny-pink flowers of lovely form on strong erect stems, making it one of the greatest of all roses for garden cultivation and for cutting. Hardy everywhere.

Price, 1st size plants, 30c each, 4 for \$1.00; Extra heavy, 2 year old plants, 90c each, 2 for \$1.50 postpaid.

Prices of Roses on this page except where noted: First size one year plants 25c each, any 3 for 60c; Strong 2 year old plants 65c each, any 2 for \$1.25, any 12 for \$6.50. Parcel Post Prepaid.

On this page and to page 22 inclusive are offered the famous Dingee Own Root Potted Roses for planting any time when freezing and frosts are over, in the spring and summer or in the fall. There are but few growers that make a specialty of such plants. We were the first in this country to make a specialty of them. Letters from our friends saying they bought roses on own roots forty and fifty years ago, still growing, still blooming, will be found elsewhere in this book. These plants are singularly free from diseases of all kinds, require no petting, no coaxing and as a rule no spraying to disfigure them. There is no closed season for planting them, to speak of.

Grown in large pots or crocks, rested during the winter at a temperature just a little above freezing they have the vigor and vitality to produce what you want—immediate results both in growth and profusion of bloom. These roses will not be found for sale in department stores or similar stores and they are to be had only from us. The prices are lower than last year. The quality, if anything, better and if you want perfect rose satisfaction plant freely of them and get your money's worth in good measure filled to overflow.

These roses have made us famous in every civilized country in the world.

HOLLYWOOD

Immense gorgeous double flowers, on long single stems, an ideal rose for cutting. Lovely shade of red or cerise, still darker as the flower opens. Delicious American Beauty fragrance. Always blooming the entire season. Good strong grower with good foliage.

Price, 1st size plants, 30c each, 4 for \$1.00; Extra heavy, 2 year old plants, 90c each, 2 for \$1.50 postpaid.

La Champagne—Semi-double peach colored blooms, slightly shaded darker. Better than Madam Butterfly.

Missouri—I have quite a number of your Roses and so far have not lost one; in fact, I intend to replace some poor ones I bought locally with Dingee Roses.—G.B.K., St. Louis.

North Carolina—Kindly send me your book on Rose Culture. My father bought Roses of you fifty years ago. Some of the mare still living at my old home near Mt. Olive, North Carolina.—Mrs. Anne J. Barbrey.

Any Two—2 year \$1.25
old Bushes below

POST
PAID



All Roses on pages 10 to 23 are strong pot-grown plants that may be planted in the open ground any time during the year after heavy frosts are past. Especially good for planting in most of the country in April, May, June, July, August, September. Grown in large pots, they are on their own roots and give magnificent results.

OWN ROOT POTTED
ROSES—Continued

CRIMSON BEAUTY

At first we were at a loss to find a name that would be descriptive of this magnificent, new crimson beauty, but the proper name soon suggested itself because this new hardy, everblooming garden bush rose is the result of this parentage—the great (American) “Hoosier Beauty” crossed with “Crimson Champion” and there you have the name “Crimson Beauty.”

This splendid new variety has wealth in abundance, grows clean, strong and sturdy, has no weaknesses and blooms in marvelous profusion, bearing its magnificent crimson flowers, which have much of the form of “Gross an Teplitz,” throughout the growing season, so that the bush is literally covered early and late with its gorgeous velvety crimson flowers. Roses of this type are in the greatest demand because of their health, beauty and permanence. One of the most vigorous growing Hybrid Tea roses we have known.



Our New Rose “Crimson Beauty”

MME. BUTTERFLY

All the color tones of Ophelia are intensified, making it a harmony of bright pink, apricot and gold. The tight buds are a lovely shade of Indian oak, yellow at the base; the opening flowers are perfect in form and texture, clear and brilliant in color and of delicious fragrance.

Miss C. E. Van Rossem—Velvety dark red, well formed buds, open flowers almost the same shade, reinforced with scarlet and black; fragrant. Strong bushy plant, free flowering. A good bedding rose on account of producing flowers under any condition.

Holt Hewett—Some growers report that this is one of the finest shaped roses, and one of the best for exhibition purposes. Bud is well shaped on erect stems opening into a large fine flower of perfect form. Dark velvety crimson flushed scarlet, sweetly scented.

American Beauty—The fame of American Beauty roses is world-wide. The rich, glowing crimson flowers, shaded and veined, are immense in size. Very double. Borne on long, stiff stems. Hardy with protection. Blooms with unusual freedom.

North Carolina—Please send latest catalog. My family has bought Roses from your company for over fifty years.—Mrs. J.A.D., Middleburg.



Mme. Butterfly

Price of Roses on this page except where noted: First size one year plants 25c each, any 3 for 60c; Strong 2 year old plants 65c each, any 2 for \$1.25, any 12 for \$6.50. Parcel Post Prepaid.

Any Two—2 year \$1.25
old Roses **1.25**
POST PAID

For a little more than former price for a single 2 year old Rose you may now get two big husky 2 year old plants for only \$1.25 except where noted.

POTTED ROSES

Continued



*David O. Dodd
One of the World's
best Crimson*

DAVID O. DODD

A recent American introduction by one of the leading Rosarians that has proven to be one of the best outdoor varieties and we have gotten many enthusiastic reports confirming our opinion concerning its good qualities. Large well formed buds of immense size opening into dazzling crimson double blooms that retain its color without fading and produced on long stems. Bush covered with these blooms the entire season thus making an attractive showing.

Plant of vigorous growth and hardy anywhere. Free of insects or disease of any kind.

Price, 30c each, 4 for \$1.00 first size plants; 2 year old plants, 75c each. Postpaid.

MRS. MAC KELLAR, H. T.

A deep citron or delicate canary yellow. Buds handsome on long stiff stems, opening into a glorious bloom of the same color. Strong grower.

Rose Hill—Sport of Columbia but superior in every way. Darker than Columbia, larger blooms, better foliage and grower. The buds and blooms are perfect in color and formation, being long pointed and solid, opening into a perfect bloom of immense size. Splendid grower, free from disease, producing an abundance of flowers the entire season. Color a pure rose pink of charming brilliance which does not lighten.

Lord Charlemont—Flowers clear crimson, deepening to carmine crimson with almost black shadings, perfectly shaped, long pointed buds, large and full sweetly scented flowers.

Wellesley—A most magnificent garden Rose of a beautiful shade of pink, vigorous, healthy growers, remarkably free-flowering.



Lovely Yellow Rose "Mrs. Mac Kellar"

Prices of Roses on this page except where noted: First size one year plants 25c each, any 3 for 60c; Strong 2 year old plants 65c each, any 2 for \$1.25, any 12 for \$6.50. Parcel Post Prepaid.

Any Two—2 year \$1.25
old Roses below POST PAID



All Roses on pages 10 to 23 are strong pot-grown plants that may be planted in the open ground any time during the year after heavy frosts are past. Especially good for planting in most of the country in April, May, June, July, August, September. Grown in large pots, they are on their own roots and give magnificent results.

POTTED ROSES—Continued

Alexander Hill Gray

After a thorough trial both indoors under glass and in the open ground, we are pleased to offer this lovely yellow Rose to our customers as one of the very best of its class and color. The color, which is a deep lemon-yellow, deepening as the flower expands, does not fade in the open ground, as is usual with such. Buds and blooms of perfect formation and of great substance, and produced in the greatest abundance throughout the entire season. Strong grower and hardy everywhere. This Rose was awarded Gold Medal by the National Rose Society.



**Gorgeous
Yellow
Rose
Alexander
Hill Gray**

Mad. Jules Grolez—The color is a distinct and charming shade of cherry-red. The fine form and attractive shape of the flowers makes them excellent for cutting.

Mrs. Henry Morse—Two contrasting tones of pink with an underlying yellow globe, double high centered. Plant tall and branching.

Jonkheer J. L. Mock—The buds are immense and of very fine form, borne on long, stiff stems. Color a clear imperial pink, reflexed petals of a lighter shade. Strong, tall grower, at its best in heat, when the heavy petals open to perfection.

SILVER COLUMBIA

This rose is a sport of the famous Columbia. The color is a clear shade of deep silver pink, lighter than that of its parent. The color deepens toward the center. The flowers are larger than Columbia, inclined to be flat, but magnificently formed on long, strong stems, which makes it an excellent rose for cutting.

Harvard—A handsome double dark red rose of exceptional merit. Blooms nearly black. Handsome long pointed buds opening into a full double bloom of the same dark shade. Fragrant as an American Beauty. Good growth and foliage.



Rose "Harvard"

New York—I planted some of your one year old own root Roses this spring and some plants were only about eight inches high and had Roses on. Just now they are wonderful healthy looking plants. I am surely pleased with them.—Mrs. J. Q., West Hempstead.

Prices of Roses on this page except where noted: First size one year plants 25c each, any 3 for 60c; Strong 2 year old plants 65c each, any 2 for \$1.25, any 12 for \$6.50. Parcel Post Prepaid.

Any Two—2 year \$1.25
old Bushes below

POST
PAID



All Roses on pages 10 to 23 are strong pot-grown plants that may be planted in the open ground any time during the year after heavy frosts are past. Especially good for planting in most of the country in April, May, June, July, August, September. Grown in large pots, they are on their own roots and give magnificent results.

POTTED ROSES—Continued

TALISMAN

Sensational world famous new bush rose, with very large, double blooms produced in constant profusion. Indescribable colors—brilliant orange yellow with coppery and vivid red shades, blended into a combination seen in no other rose; fragrance exquisite, buds long and pointed, splendid for cutting, very hardy, free-blooming. One of the most sensational fancy colors now known. Especially fine in early summer and late fall.

Francis Scott Key—It is by far the most popular red rose, for its glowing colors, its remarkable size, its fullness, its perfection of form make it a greatly prized variety. The color is a rich, glowing scarlet with darker shadings, becoming darker as the flower ages.

Royal Red—A vigorous grower, large heavy dark green foliage and good bloom of intense glowing crimson. The buds are large, well formed and the fragrance is delightful.

Pink Maman Cochet—The Queen of all Pink Garden Roses. The buds are large, full and firm, elegantly pointed, showing depth and richness as they expand. The superb flowers open perfectly double, are extra large and of splendid substance.



Talisman

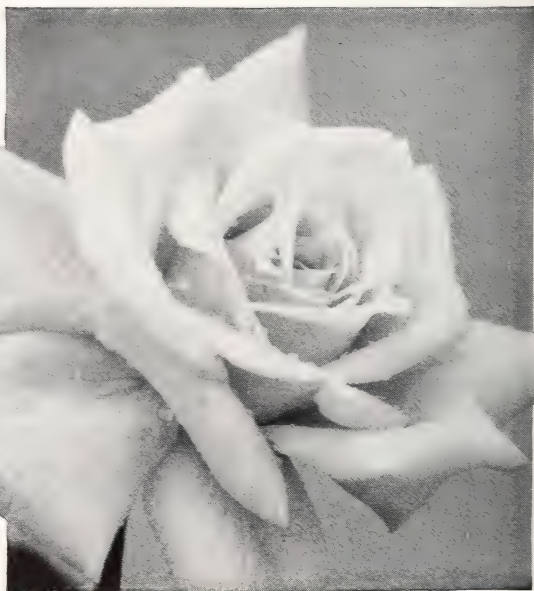
KOOTENAY

The buds are long and pointed, and of exquisite form, opening to large rounded flowers full and double. Color creamy white, with shadings of flesh colors towards the center. Foliage heavy, unaffected by disease and little troubled with insects.

Templar—Bud medium size, globular; flower medium size, double globular, very lasting. Clear bright red, exceedingly double fine strong stems.

Pink La France—Exceedingly sweet and handsome; flowers and buds large size, color lovely shade of silvery pink, tinged with crimson; fragrance delicious; flowers very full and beautiful.

Rhea Reid—As an all round garden rose this has no superior, for it is famed for its strong constitution and its ability to withstand the ravages of disease and insects. Color a vivid scarlet crimson. Flowers are marvels of beauty, large, bold, and of splendid substance. Strong, sturdy, vigorous grower.



An Unusual Rose "Kootenay"

Prices of Roses on this page except where noted: First size one year plants 25c each, any 3 for 60c; Strong 2 year old plants 65c each, any 2 for \$1.25, any 12 for \$6.50. Parcel Post Prepaid.

Any Two — 2 year \$1.25
old Bushes below **1.25**
POST PAID



For a little more than former price for a single 2 year old Rose you may now get two big husky 2 year old plants for only \$1.25 except where noted.

POTTED ROSES—Continued

WM. R. SMITH

Especially suited for outdoor planting and cutting purposes. The soft blending of the salmon-pinks, rose-pinks, and the magnificent flesh tints resemble the blush of a maiden's cheek. The flowers are large, full and double, and most exquisitely formed. The petals are so firm they look like wax. Perfect buds.

Freiherr Von Marschall—It has wonderfully beautiful foliage and produces large, full, beautifully shaped flowers, which are borne in profusion all through the season. The color is bright red.

Queen Louise, H.T.—Full globular blooms of pure white. Strong branching grower.

Double Pink Killarney (The Famous Irish Rose)—The bush is strong and upright, with beautiful, deep bronzy green foliage, and the Rose is entirely free-blooming, bearing immense long pointed buds and massive flowers on big heavy shoots. The color is deep, brilliant and sparkling shell-pink. The flowers are of delightful fragrance.

Yellow Killarney (Mme. Jenny Gillemot)—A brilliant saffron-yellow Rose, opening canary with dark golden shades. Buds long and pointed, beautiful in form and color, the flowers large, with immense petals.



Wm. R. Smith

GRACE N. CROWELL

Color a brilliant rose with petals heavily veined with vinous crimson while the base of the petals is shaded primrose yellow. Handsome buds opening into an immense perfect bloom on long stiff stems.

Double White Killarney—This offspring of the Pink Killarney is one of the most exquisite white Roses grown. The long, full buds are handsome in shape and full-open flower most refined and beautiful in form and texture.

White Maman Cochet—A most magnificent snow-white Rose, with sometimes a faint tinge of pale blush.

Bridesmaid—This variety is valuable for cutting and does finely in the open ground; a sport from the old and popular pink Tea Catherine Mermet.

Catherine Mermet—A very free bloomer, producing clear, shining pink flowers, the center being shaded fawn and amber.

Lady Hillingdon—Apricot yellow shaded to orange on the outer edge of the petals, becoming deeper and more intense toward the center of the bloom. The color does not fade after the bloom is cut, but invariably becomes darker.

Etoile de Lyon—Blooms freely, beautifully formed, rich golden yellow.

Lady Plymouth—A Rose similar to Souv. de Pierre Notting, which means a handsome bud, full, double bloom of large size. Deep ivory cream, faintly flushed.

Blumenschmidt—Citron-yellow flowers, each petal of which is edged with dainty rose.

Souv. de Pierre Notting—Color apricot-yellow, tinged with golden and mixed with orange-yellow, edge of petal shaded carmine-rose.



Grace N. Crowell

Prices on Roses on this page except where noted: First size one year plants 25c each, any 3 for 60c; Strong 2 year old plants 65c each, any 2 for \$1.25, any 12 for \$6.50. Parcel Post Prepaid.

Any Two — 2 year **\$1.25**
 old Bushes below **POST PAID**



For a little more than former price for a single 2 year old Rose you may now get two big husky 2 year old plants for only \$1.25 except where noted.



Pres. Herbert Hoover

SENSATION (H. T.)

As the name implies it is a "Sensation," due to the color and habit of growth. Anyone that has seen Premier can imagine what this is like, being better in every way, color, foliage and growth. Buds long and pointed, opening full and double and retaining its color in the open flower. Blooms produced on long stiff stems well above the foliage and in great profusion. Color an entrancing shade of red.

MME. SEGOND WEBER

One of the most beautiful Roses, of ideal form. The long, pointed buds are pink or salmon-flesh and when fully expanded are immense in size, full and double; as the flowers open it deepens until it fairly glows with its warm, deep pink. Highly fragrant. Very hardy and constantly in bloom.

PRESIDENT TAFT

A most remarkable pink Rose, with a shining intense deep pink color of a very distinctive shade. Splendid grower in every respect.

Florida—It may be of interest to you to know that in the winter of 1933 I lost 21 out of 25 grafted Roses properly covered and protected, but out of 20 of your Own Root Roses treated as the aforesaid 25, I lost only one. This was in northern Pennsylvania during a very unusually cold season. I am now in Florida where the winter is unknown, but soil and conditions are quite different.—S.V.B., St. Petersburg.

POTTED ROSES—Continued

PRESIDENT HERBERT HOOVER

A glorious Rose, wonderfully free in the easy manner in which it grows and charming in its color arrangement which is a splendid combination of cerise-pink, flame, scarlet, and yellow. This combination of colors gives the most dazzling color effect imaginable. The buds are beautifully pointed; the flowers large, composed of broad, thick, heavy petals with moderate fragrance produced on long stiff stems, ideal for cutting. Outdoors it has proven to be a most wonderful grower and bloomer.

Price, First size plants 30c each, 4 for \$1.00; 2 year old plants \$1.00 each, 2 for \$1.75. Postpaid.

Mrs. W. E. Lenon—Bright scarlet and vermilion buds opening into a full handsome double flower of almost perfect form of large size. Fragrant almost as the world famous American Beauty. Extraordinary free bloomer and good grower.

Mass.—I have been buying your own root potted Roses for many years and like them, and they are always so well packed and arrive in such good condition.—Mrs. P.B.H., South Lincoln.

Missouri—I was much pleased with the Roses you mailed me. They are fine healthy plants and came thru in apparently first class condition. The West Grove stock is the healthiest looking stock, and the best packed I've ever seen.—W.C.P., Moberly.



A Real "Sensation"

Prices of Roses on this page except where noted: First size one year plants 25c each, any 3 for 60c; Strong 2 year old plants 65c each, any 2 for \$1.25, any 12 for \$6.50. Parcel Post Prepaid.

Any Two—2 year \$1.25
old Roses below 1 POST PAID



All Roses on pages 10 to 23 are strong pot-grown plants that may be planted in the open ground any time during the year after heavy frosts are past. Especially good for planting in most of the country in April, May, June, July, August, September. Grown in large pots, they are on their own roots and give magnificent results.

POTTED ROSES—Continued

"CHARLES DINGEE"

The Most Wonderful Bush Rose in the World

The "Charles Dingee Rose" is the result of cross-breeding between **Hermosa**, that grand old hardy pink variety, and **White Maman Cochet**, perhaps the greatest of all white garden Roses—a superb parentage, which insures its offspring every point of excellence. With the hardy vigorous constitution of a Hybrid Perpetual, growing to perfection in almost any soil or situation, it has the most magnificent foliage, absolutely free from disease, that we have ever seen on any Rose.

Growing to a height of 2 to 3 feet, Charles Dingee blooms continuously, producing immense, deep, double, grandly formed flowers on long, stiff, erect stems; both in bud and bloom their beauty is nothing short of superb, practically impossible to describe because of the delicate blending of colors—rose tints in the centers of the flower, gradually shading off into pale blush creamy white, a color effect both entirely new and distinct, exquisitely beautiful.

F. R. Patzer—A Rose of striking and pleasing appearance, owing to the delicate blending of color, which is a creamy-buff, with the reverse of petals a delicate warm pink, and as they expand the color becomes a light orange pink.



Charles Dingee a Great Rose

New Jersey—Two years ago I purchased several two and three year old Rose bushes. The Charles Dingee was one of them. This year I had wonderful blooms on them, especially Charles Dingee had beautiful colored blooms. It is a wonderful rose and a fine bloomer. It has several fine blooms on bush at this writing.—J. K., Newark.

ETOILE DE HOLLAND

Flower bright, dark red, of good size, fairly full; deliciously perfumed. Growth vigorous, upright. A cross between General MacArthur and Hadley. A rose of great future. Note a more detailed description page 5.

Joanna Troutman—The deepest of all yellow roses yet produced, holding its color to the very last. It is a fine grower of free-branching habit, with beautiful bronzy green foliage. Strictly ever-blooming, every shoot being crowned with a flower. Buds long and pointed of deep copper color. Flowers, when expanded, of the richest orange-yellow ever seen in a flower.

White Radiance—Same characteristics as the Radiance roses. Blush white.



Great Crimson Rose Etoile de Holland

Prices of Roses on this page except where noted: First size one year plants 25c each, any 3 for 60c; Strong 2 year old plants 65c each, any 2 for \$1.25, any 12 for \$6.50. Parcel Post Prepaid.

Any Two—2 year **\$1.25**
old Bushes below **POST PAID**



All Rosos on pages 10 to 23 are strong pot-grown plants that may be planted in the open ground any time during the year after heavy frosts are past. Especially good for planting in most of the country in April, May, June, July August, September. Grown in large pots, they are on their own roots and give magnificent results.

DINGEE POTTED ROSES

Plant them Spring, Summer or Fall

Under Dingee methods of growing you can have at low prices a new feature and that is potted rose plants that may be planted with the greatest satisfaction everywhere, any time in the year that the ground is not frozen.

E. G. HILL

(See color illustration Front Cover)

Introduced by the great American Rosarian E. G. Hill as a cut flower variety, but growers discovered it to be one of the finest outdoor Roses in existence today. Strong upright grower, vigorous and healthy. Buds ideal, long and pointed on good stout stems, opening into a full double bloom of crimson scarlet retaining its color until the petals fall. Blooms continuously from early season until late fall. Hardy anywhere. The striking color makes it one of the most attractive garden varieties.



A 2 year old rose in 6 inch pot



2 Year old rose out of pot



Wrapped ready for shipment

Briarcliff—The best sport of Columbia yet produced, and one of the grandest Roses that it has been our privilege to grow, and we have grown a large number of the roses that have been produced by all countries. Bud beautifully formed, long, solid but not too pointed, opening into one of the finest blooms that could be imagined. Very double and a brilliant rose pink.

Mrs. Aaron Ward—Most exquisite buds of golden buff or fawn, opening to full, double, well formed flowers, of pinkish fawn. The plant does not grow large, but is dwarf and spreading, covered with heavy foliage that is immune from disease and insect pests. This is an excellent rose for the garden, for it requires little attention, blooms profusely, and is most useful for cutting and for the buttonhole.

Columbia—Almost thornless. Wonderful strong shoots four feet or more in length, each producing a magnificent bloom, often measuring six inches across the open flower. Color a deep peach pink, deepening into a glowing pink, a perfect color.

Golden Gate—Color rich creamy white, shaded with golden yellow and clear rose.

Gen. Arnold Janssen—Color a deep glowing carmine. Free bloomer. Buds long and pointed on long, stiff stems.

Gruss an Teplitz—For intense and dazzling color there is no other rose to compare with this—firy crimson, shaded with a dark velvety sheen. The flowers are large and handsome, produced in continuous profusion throughout the season.

WHY DON'T YOU?

have your neighbors join you to get the benefit of the low price for a dozen two year old plants and if your combined orders are sent in with names and addresses amounting to \$25.00 or more you can have the benefit of a further discount of 10%. This brings the price of a single two year old plant to a wholesale price of 49c. We pay postage.

BARGAIN PRICES—Every item in this book at the lowest all time prices. Amazing values. Magnificent stock. Everything postage prepaid to your door. Satisfaction Guaranteed!

Prices of Roses on this page except where noted: First size one year plants 25c each, any 3 for 60c. Strong 2 year old plants 65c each, any 2 for \$1.25, any 12 for \$6.50. Parcel Post Prepaid.

Any Two—2 year \$1.25
old Bushes below POST PAID



For a little more than former price for a single 2 year old Rose you may now get two big husky 2 year old plants for only \$1.25 except where noted.

MINIATURE OR BABY ROSES

A conspicuous group is composed of the **Baby Ramblers**, so called because of the resemblance, in dwarf (12 to 18 inches), to the Ramblers, with blooms produced in large, many flowered clusters. Absolutely hardy.

Anny Muller—Color a shiny and brilliant pink, produced in the greatest profusion in large clusters.

Double White Baby Rambler—Great masses of double, pure white flowers, covering the plant as with a mantle.

Baby Tausendschon—Flowers firm, white delicately flushed pink, changing to deep rose-carmine.

Geo. Elger—It produces great quantities of lovely little buds of golden-yellow, opening into miniature symmetrical Roses. Bush is so loaded with blooms they resemble a huge bouquet.

Mrs. Wm. Cutbush—Flowers of pale pink borne in huge tusses throughout the entire summer.

Orleans—Brilliant geranium red flowers, suffused rose, with a rosy-white center.

Clothilde Soupert—A strong, dwarf grower and a truly wonderful bloomer, producing clusters after clusters of the finest formed flowers. Full and double, and deliciously sweet. Color effect is beautiful, ivory-white, shading toward the center to silvery-rose.

BABY DOLL OR TIP TOP

The flowers are miniature in size but magnificent in form and produced by the hundreds. Exquisite for cutting or bouquets and bedding purposes. Makes a magnificent show in the open ground, always blooming from early spring until late fall. The tips of the petals are vivid scarlet, then mellowing down through shades of pink into saffron, lavender and gold, finally into deep old gold, a combination extraordinary and pleasing. Foliage slender and produced in abundance, dark lustre green.

Mlle. Cecile Brunner—Rosy pink on rich creamy white ground; a great bloomer, very satisfactory for bedding.

Perle d'Or—Coppery gold, changing to fawn and salmon; flat-rayed form, very double; elegantly perfumed.

Gruss an Aachen—Yellowish rose colored with salmon pink and red shadings. Blooms larger than the average Polyantha.

Lafayette—Very attractive large, bright crimson-scarlet, in sprays of 40 or more flowers each.



*The Exquisite
"Baby Doll"*

"STURDY AS OAK" RUGOSAS

Sir Thomas Lipton—The best pure white Rugosa Rose. Strong and vigorous, grows 4 feet high. Flowers double.

Conrad Ferdinand Meyer—Strong grower; perfectly hardy; flowers large; well filled, fragrant. Silver rose.

New Century—Bright, rosy pink, with red center, with petals widely bordered with creamy white.

GREEN ROSE—VIRIDIFLORA

A most interesting member of the Rose family, grown for its oddity. Petals are small, pointed, set thickly, and of the same color as the foliage—dark pea green.

Colorado—Last year I ordered about 38 Roses from you and they have all done very well. If I had allowed them, all would have bloomed, but I pinched back the buds from the smaller plants. The Baby Doll roses were especially prolific, especially in the fall, when they gave us a wealth of blooms. This year I expect to enjoy many lovely blooms.—H. J., Denver.

Ohio—Having had such amazingly good success with other first size plants I have ordered from you, I am enclosing an order for some more.—C. C. W., Akron.

Pennsylvania—Thank you for the Roses replacing the five ordered in the spring which did not grow. The seven of the twelve that did grow were a joy all summer, and I anticipate an equal pleasure from these just planted for next summer. I have about 50 Dingee Roses in my garden all of which have given excellent satisfaction.—Mrs. L. B. Y., North East.

Maryland—It has been over fifty years since I began dealing with your company and I must say I have always received perfect satisfaction, and our business relations have been most cordial. I am still enjoying good health and take a great interest in raising flowers, besides I have found it quite remunerative. All my Roses are "Dingee" stock as well as the most of my shrubbery.—J. T. S., Baltimore.

Prices of Roses on this page except where noted: First size one year plants 25c each, any 3 for 60c; strong 2 year old plants 65c each, any 2 for \$1.25, any 12 for \$6.50. Parcel Post Prdpaid.

Any Two—2 year \$1.25
old Roses below POST PAID

All Roses on pages 10 to 23 are strong pot-grown plants that may be planted in the open ground any time during the year after heavy frosts are past. Especially good for planting in most of the country in April, May, June, July, August, September. Grown in large pots, they are on their own roots and give magnificent results.



Red Radiance

RADIANCE

The Standard Garden Rose of America. This is by far the best pink garden rose in existence, because of its vigorous, heavy growth, and its great abundance of bloom. Extremely easy to grow, requiring little attention, it is exceptionally well adapted for the amateur's garden. The color is almost a solid rose-pink, but with lighter tints and reflections. Long, heavy stems, bearing large and beautiful buds which open slowly into globular, somewhat loosely formed, fairly double flowers. This is one of the hardiest of roses, and will survive very severe winters.

Mad. Caroline Testout—In color, it is of a satiny rose, deepening to clear red in the center. One of the most dependable roses.

Etoile de France—The strong, upright bushes have beautiful bronze-green foliage, which is not subject to insect attacks. The bushes are blooming constantly, producing large, massive, deep, full cup-formed flowers of clear red or velvety crimson.

Perle Von Godesberg—This magnificent Rose was originally sent out as a Yellow Kaiserin Augusta Victoria, it having all the beauty of form and substance of that great garden Rose. The color is a rich canary-yellow with shadings of saffron.

New York—We ordered your Trial Offer of first size Own Root Roses this spring, and I am so pleased with them that I want to write and tell you about them. Seven of the plants have bloomed and they are lovely. The Baby Doll is exquisite and the others are such beautiful large fine Roses for such little plants. —Mrs. L. S., Hagaman.

Prices of Roses on this page except where noted: First size one year plants 25c each, any 3 for 60c; Strong 2 year old plants 65c each, any 2 for \$1.25, any 12 for \$6.50. Parcel Post Prepaid.

POTTED ROSES—Continued

Red Radiance

The Radiance Roses (Pink and Red) are the Standbys of the Rose Gardens.

Very similar to Radiance and equally satisfactory. Large, globular, cupped blooms, of strong, clear red, with no trace of any other color. An exceptionally vigorous grower, sending forth heavy canes, with healthy foliage. Very liberal in producing blooms, it cannot be surpassed as a red garden rose. Extremely hardy. One of the dependable roses as it is always in bloom no matter what the conditions are.

Crusader—Rich velvety crimson of bright hue and of massive form, this rose is one of the very finest of the reds. The flowers are very large, full, extremely double, with petals of splendid substance. Plant is of moderate growth, with exceptionally fine disease resistant foliage.

Crimson Queen—Because of its rich coloring this is a wonderful garden or bedding rose—bright, velvety crimson. A strong, vigorous, upright grower, always in bloom.

Rev. F. Page-Roberts—Copper-red buds of great length, opening to golden yellow blooms stained outside with red, fully double, and very large; fragrant. Strong, branching plant with healthy foliage. Price, 1 year plants 30c each, 4 for \$1.00; 2 year old plants, 75c each.

Dean Hole—Silvery carmine Roses with salmon shadings. The coloring is distinct and unique; handsome tribute to the eminent Rosarian whose name it bears.



Pink Radiance

Any Two—2 year \$1.25
old Bushes below POST PAID



For a little more than former price for a single 2 year old Rose you may now get two big husky 2 year old plants for only \$1.25.

Dingee Hardy Climbing Roses

Own Root Potted Plants

Climbing American Beauty

The colors of carmine and crimson are those of the bush rose American Beauty. Exceptionally fine buds, opening into very large flowers of splendid form, borne on long stems, and available for cutting. Vigorous, healthy, leathery foliage, retained usually throughout the season. The blooming season is unusually long for a climbing Rose.

Rosarie (Pink Tausendschon)—This is a bright pink form of Thousand Beauties.

Mary Wallace—Blooming with great freedom in spring and bearing a considerable number of fine buds in summer and fall. Flowers very large, usually exceeding 4 inches across; well formed semi-double, of a bright clear rose-pink with salmon base to the petals.

Christine Wright—Thick leathery dark green foliage, practically immune from insects or disease. Blooms are produced singly and in large clusters, each bloom perfect in form and from 3 to 4 inches in diameter. Color an exquisite shade of bright wild-rose pink.

Dorothy Perkins—A brilliant pink rambler Rose, flowers in large clusters, prettily crinkled petals. Hardy and satisfactory.



Climbing American Beauty

Jacotte—Color deep coppery yellow, tinted coppery red, borne several together on long stems. Very fragrant.

Keystone

Dingee Rose. There are many yellow Roses new and old coming and going continuously. This great Rose of ours, however, goes on indefinitely, coming into popularity year after year. Perfectly hardy everywhere. Strong vigorous climber. Very distinct foliage. Healthy. May be classed as a hardy everblooming Rose because it blooms off and on during the growing season, at least it does with us in the open ground and always has. The color is a deep lemon yellow. Flowers very double, beautiful bud, sometimes coming singly then again in clusters. A wonderful satisfactory hardy free blooming yellow climbing Rose is this.

Marechal Niel—The wonderful garden Rose of the Southland. Deep golden yellow. In the North, should have very careful protection during winter.

Climbing White Maman Cochet—Exquisite white flowers perfect specimens of the White Maman Cochet Rose.

Climbing Columbia—Foliage deep glossy green immune from disease and insects. Hardy in any location. Blooms with the greatest freedom the entire season. Buds and blooms of immense size often measuring six inches in diameter, of perfect formation, borne singly on long shoots. Color clear imperial pink.

Climbing Cecile Bruner—Color rosy p.nk, rich, creamy-white ground. Needs protection.



Everblooming Keystone

Price Potted: First size, one year plants, 25c each, for all Roses on this page, 5 for \$1.00; two year old plants, 65c each, 2 for \$1.25; any 12 for \$6.50, postpaid.

Any Two—2 year \$1.25
old Bushes below **1** POST PAID

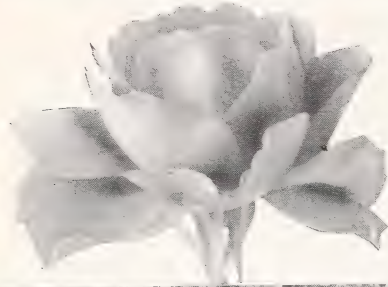


All Roses on pages 10 to 23 are strong pot-grown plants that may be planted in the open ground any time during the year after heavy frosts are past. Especially good for planting in most of the country in April, May, June, July, August, September. Grown in large pots, they are on their own roots and give magnificent results.

Dingee Hardy Climbing Roses

OWN ROOT POTTED PLANTS

- Birdie Blye**—One of the Everblooming hardy climbers. Always in bloom. Perfectly hardy. Good strong grower. Foliage bright glossy green and free from insects or disease. Blooms full and double over three inches in diameter. Color a bright carmine, changing to bright rose.
- Thousand Beauties**—Large flowers with ruffled petals, borne in enormous trusses, from 10 to 15 in a cluster. Colors vary through shades of yellow, cream and rose pink.
- Dr. W. Van Fleet**—Flowers when open run four inches and over in diameter. The center is built high, petals beautifully undulated and cupped. The color is a remarkably delicate shade of flesh-pink on the outer surface, deepening to rosy flesh in the center. Flowers full, double, of delicate perfume; buds pointed.
- Mrs. Robert Peary**—Blooms throughout the season and the flowers are magnificent beyond description. The buds are long and pointed, finely modeled. Pure white.
- Excelsa**—A remarkable grower, free from insects and producing a great quantity of blooms of crimson maroon with the tips of the petals scarlet.
- Veilchen Blau or Violet Blue**—The Blue Rose is one of the most rampant growers we have ever seen, covering a large porch in a single season. The flowers are borne in loose clusters and are a delightful shade of blue—something entirely different from any other Rose.
- American Pillar**—The flowers are produced in profusion, fairly covering the bush, color bright pink. In the fall, the red berries are highly ornamental.
- Climbing Gruss an Teplitz**—This is an exact counterpart of the Bush Rose Gruss an Teplitz, but a vigorous climber, attaining a height of 10 to 15 feet in a single season. When it first blooms in the spring it is a dazzling sheet of velvety crimson.



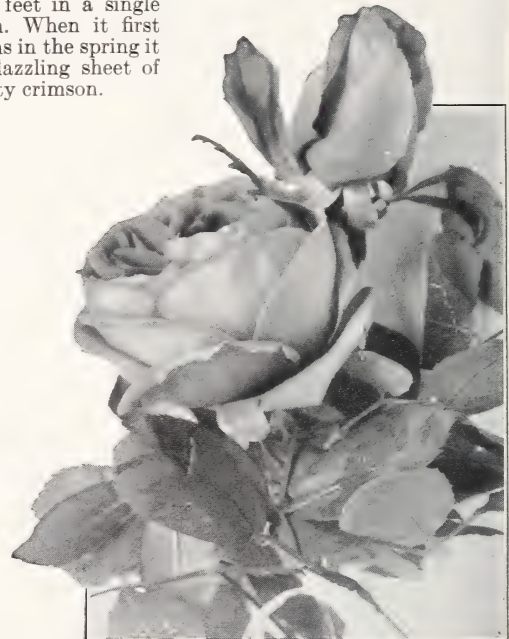
Paul's Scarlet Climber

Paul's Scarlet Climber—It probably is the most attractive climbing Rose of the pillar type ever introduced. The blooms come in massive profusion, retain their color a long time without fading and the color is a most vivid scarlet. The individual flowers are large. It makes the most brilliant display of any Rose of this type, new or old, now known. It will hold its popularity indefinitely because of its great merit. Perfectly hardy everywhere.

Mme. Gregoire Staechelin—A new type of climbing Rose from Spain. Cross between the popular variety Frau Karl Druschki and Chateau de Clos Vougeot, and it seems to have inherited the good qualities of both. Long pointed buds of crimson at first, then as the blooms expand show splashes of carmine with pear pink inside.

Alberic Barbier—A thrifty yellow; flowers are bright and full, very fragrant.

Price of Potted Climbing Roses on this page, first size plants, 20c each; any 6 for \$1.00; two-year-old plants, 65c each, 2 for \$1.25, 12 for \$6.50, by Parcel Post Prepaid.



Mme. Gregoire Staechelin

Dingee Hardy Peonies

Once Peonies are planted they last for a lifetime. They stand the severest winters without the slightest protection. Especially fine for single specimens and cemetery planting. Prices include postage.

President Taft—Rose type. Hydrangea-pink.

Sarah Bernhardt—Apple blossom pink.

Lord Kitchener—Brilliant scarlet.

Livingstone—Pale lilac rose with silvery tips.

Mad. Jules Dessert—Pure white overlaid sheen of delicate blush.

Primevere—Guards creamy white splashed scarlet; center light sulphur-yellow.

Claire Du Bois—Rose type, double, silvery pink.

Dr. H. Barnsby—Large, full, globular blooms. Soft Solferino red shaded crimson.

Grover Cleveland—Dark crimson. Strong vigorous grower.

Karl Rosenfield—Brilliant dark crimson.

Suzette—Bengal rose shaded carmine purple.

Alsace Lorraine—Color rich creamy white, center delicately tinted brownish yellow.

Elie Chevalier—Color Tyrian rose, center flecked with crimson.

James Kelway—Rose white changing to a milk white, tinted yellow at base of petals.

Monsieur Jules Elie—Color an ideal glossy lilac-pink shading to deeper rose at the base.

Baroness Schroeder—Baby pink fading to the purest white.

Tourangille—Color pearly white overlaid with delicate salmon and with shades of La France rose.

Price of above New Peonies, 75c each; 2 for \$1.25, postpaid.

STANDARD PEONIES

Price, strong roots, 50c each; 2 for 75c.

Caroline Allen—Double. Rose and Salmon.

Candidissima—Double. Creamy white.

Canary—Double. White primrose center, late.

Duchesse de Nemours—Sulphur-white.

Duke of Wellington—Sulphur-white. Double.

Edulis Superba—Double. Brilliant pink.

Faust—Delicate light pink; double, late.

Festiva Maxima—White center, flaked red.

Festiva Alba—Cream-white, red spots. Double.

Jeanne d'Arc—Pure white. Early, double.

L'Eclatant—Double. Crimson red.

Lady Bramwell—Pink and rose. Double.

Modeste Guerin—Deep rose. Double, midseason.



Double Peony

Marechal Valiant—Double. Mauve pink.

Rosea Elegans—Soft rose. Double.

Mixed varieties, 40c each; \$4.50 per doz., postpaid.

JAPANESE SINGLE PEONIES

Claire—Dark red, yellow stamens.

Eva—Bright crimson, yellow stamens.

Jacqueline—Pure white with yellow stamens.

Nymphe—Flesh pink with yellow stamens.

L'Etincelante—Brilliant carmine, silvery margin.

Mikado—Crimson with gold center.

Clarisse—Light pink, changes to pure white.

Price of above New Peonies, 75c each; 2 for \$1.25, postpaid.

CHOICE GERANIUMS

CHOICE DOUBLE

Alphonse Ricard—Semi-double; orange red.

Jules Vasseur—Bright scarlet, white center.

Jean Viaud—Soft pink, white blotches.

Berthe de Priscilla—Bright silver rose-pink.

John Doyle—Rich scarlet. Very effective.

Mme. Recamier—Pure white. Strong grower.

Mme. Buchner—Snow white; vigorous.

S. A. Nutt—Rich, dark crimson, superb.

Beaute Poitevine—Bright salmon pink.

La Favorite—Snowy-white; fine.

Granville—Deep rose-pink with white blotches.

Jacquerie—Deep carmine red.

Feuer—Brilliant crimson-red. Dwarf.

Mad. Salleroi—Green, dotted white.

Rose-Scented—Delightful scent.

Lemon-Scented—Deliciously scented.

Price of Geraniums: Strong plants from 3 inch pots, single or double varieties, 15c each; 2 for 25c; \$1.50 per doz., postpaid.

DINGEE CALLA LILIES

Lily of the Nile—Grand white flowers. Strong plants. 20c each, postpaid.

New Yellow Calla—A grand novelty. Large fragrant yellow flowers. 25c each, postpaid.

Everblooming Calla Godfrey (Dwarf)—In bloom all the time. Fine. 20c each, postpaid.

Spotted Calla—Leaves dark, rich green, dotted with white. Ornamental even when not in flower. Beautiful white flowers with deep black throat. 20c each, postpaid.

SPECIAL OFFER—One each of the 4 Callas offered above sent postpaid for 75c.



Geraniums

DINGEE BEAUTIFUL CANNA LILIES

CANNAS

Their brilliant, bizarre colors are found in no other summer blooming plants. In clumps, beds, edgings they make a sensational show all summer long and up until cut down by frost.

Take the roots up in the fall and store them in a warm dry place.

Rosmond Coles—Bright red petals with edge bordered with bluish white. 2½ to 3 ft. Very striking.

Nokomis—5 feet. Large, vivid crimson flowers with a rich silky sheen on the petals. Rich bronze foliage.

King Humbert—5 feet. Immense dark bronze foliage with great heads of orange-scarlet flowers.

President—Produces immense heads of glowing crimson flowers 7 inches across the open bloom, on strong erect stalks well above the foliage; 4 feet in height.

Eureka—The best white. 3 feet:

Yellow King Humbert—4 feet. A sport from the bronze foliage variety of the same name but with blooms of yellow dotted with red, and green foliage.

Mrs. Alfred F. Conard—4 feet. Color, a beautiful shade of salmon-pink. Flowers of immense size.

City of Portland—3 feet. Beautiful shade of deep pink, deeper color than its parent, Mrs. Alfred Conard. Blooms produced in marvelous profusion.

The Ambassador—4 feet. Brilliant, large, cherry-red flowers, borne freely on strong stems well above the healthy bronze foliage. Splendid for bedding.

Price above Cannas, strong 3 inch pot plants, 20c each, \$2.25 doz., postpaid.



Bed of Dingee Cannas

SUMMER FLOWERING GLADIOLI

Among the most popular summer-flowering bulbs, and of high decorative value, either in the garden or as a cut flower. All bulbs sent out by us are first class, sure to bloom. They should be planted in a sunny position about May 1.

Price: named Gladiolus below: any 6 for 30c; 50c per dozen, all postpaid.

America—The most beautiful variety in cultivation. Soft flesh-pink, slightly tinged with lavender.

Chicago White—Pure white; lavender stripes.

Mrs. Frank Pendleton—A lovely salmon pink.

Baron Hulot—Rich, royal violet-blue.

Crimson Glow—Bright crimson-scarlet.

Halley—Salmon-pink, immense.

Wilbrink—Color delicate pink.

Herada—Mauve, deeper markings in the throat.

Souvenir—Superb golden yellow.

Mrs. Frances King—Light scarlet or flame color.

Le Marechal Foch—Soft flesh-pink.

Golden Measure—Yellow.

Miss Gladioli—35c per doz.; \$2.25 per 100, postpaid.



Mrs. F. Pendleton Baron Hulot

Herada

Souvenir

America

Crimson Glow

Chrysanthemums, Most Popular Fall Flowers

Special Offer

8 CLIMAX COLLECTION 75c

One each of the following varieties.
Hardy Pompon Mums. Sent postpaid
for 75c.

- | | |
|------------------|------------------|
| 1 New York | 1 Diana |
| 1 Christmas Gold | 1 Melba |
| 1 Red Doty | 1 Dorothy Turner |
| 1 Climax | 1 Lillian Doty |



The Above illustration gives but a faint idea of the gorgeous colors of these popular flowers

Hardy Pompon Chrysanthemums

These are entirely hardy and produce hundreds of perfectly double miniature flowers, making a gorgeous show. Last until late in the autumn. We offer the choicest varieties only. **Price all Pompon Mums, plants, 15c each; 4 for 50c, \$1.25 doz., postpaid.**

- Christmas Gold**—Button type. Bright yellow.
- New York**—Large button type. Light bronze.
- Buckingham**—Single daisy type. Clear pink.
- Diana**—Large aster type. White.
- Godfrey**—Large aster type. Light pink.
- Golden Climax**—Large button type. Golden yellow.
- Klondyke**—Aster type. Bright yellow.
- Lillian Doty**—Aster type. Shell pink.
- Red Doty**—Aster type. Dark red.
- White Doty**—Aster type.
- Sunshine**—Anemone type. Bright yellow.
- Dorothy Turner**—Aster type. Bronze and old gold.
- Edith Newberry**—Aster type. Orange rust.
- Frau Beau**—Large double. Yellowish brown.
- Red Beau**—Large double. Reddish bronze.
- Legal Tender**—Large double. Bronze and gold.
- Melba**—Single. Orange bronze, yellow center.
- Norma**—Anemone type. White, pink and yellow.
- Stoplight**—Anemone type. Crimson petals with yellow center.
- Unalge**—Large double. Yellow.
- Garza Supreme**—Anemone type. White.
- Yellow Garza Supreme**—Anemone type.

German Iris

The memory of the "Blue Flag" of the old-time gardens is one ever sweet to those whose lives were lived in such surroundings, and while the "modern" Irises if we may use the term, will remind one of the old days, they too, like everything else of these days have yielded to the influence of improvement, and there has been evolved a race of flowers absolutely bewildering in glory of their form and color.

Canary Bird (Flavescens)—Lovely pale yellow.

Darius—Yellow and lilac.

Honorabilis—Deep yellow; mahogany falls.

Florentina Alba (Silver King)—Early white.

Ingeborg (Interregna)—Immense white; early.

Mrs. H. Darwin—White, violet, rather dwarf.

Lohengrin—Deep violet mauve, almost pink.

Queen of May (Rosy Morn)—Lovely rose lilac.

Madame Thibault—White, bordered rose lilac.

Cherion—Standard lilac-mauve; falls mauve.

Price, Iris: strong field grown roots, 15c each; 8 for \$1.00. Mixed varieties, 10c each; \$1.00 per doz., all postpaid.

**See next page for
Large Flowering
Chrysanthemums**

Large Flowering Chrysanthemums

These produce enormous, massive flowers of most beautiful colors and perfect shape such as are sold by the Flower Shops. Any one can grow them. Their culture is the easiest. See "How to Grow Them" on circular sent free if a stamped envelope is sent for mailing. Our collection contains the best and most beautiful of the newer varieties, as well as the choicest of the standard sorts. We offer them at prices within the reach of all, as we would like to see them growing in every garden and in every home.

Price: Strong, healthy pot plants, 15c each; 4 for 50c; \$1.25 doz., post-paid.

Bronze Pearson—Large bronze.
Charles Rager—White.
Citronella—Incurve yellow.
Clara B. Ford. Light yellow. Large.
Friendly Rival—Late bright yellow.
Gladys Pearson—Dark bronze.
Golden Wedding—Bright yellow.
Harvard—Crimson.
Helen Frick—Dark pink. Large.
Hilda Berger—Dark bronze.
J. W. Prince—Dark pink.
Margaret Graham—Late pure white.
Marie de Petris—Bright yellow. Large.
Mrs. H. C. Kidder—Fine yellow.
Nellie P. Ross—Late light yellow.
Oak Leaf—Dark bronze.
Pacific Supreme—Early light pink.
Pink Chieftan—Fine pink.
Pink Frick—Light pink.
Quaker Maid—White. Early.
Roman Gold—Bronze yellow.
Rose Chochard—Dark pink.
Silver Sheen—Early white.
Snow White—Pure white.
Sun Glow—Early yellow.
Sun King—Bright yellow.
White Frick—Blush white.
Yellow Pearson—Late yellow.



Dingee Chrysanthemum

HARDY CLIMBING VINES

Clematis Paniculata—The flowers are pure white and are borne in great panicles or clusters of bloom, fairly covering the plants, so that it is a mass or sheet of fleecy white with an exquisite fragrance. It begins to bloom late in August the first year. **Strong plants in pots, 20c each; Strong two year old field-grown plants, 50c each. All postpaid.**

Boston Ivy (Ampelopsis Veitchi)—25c each; 5 for \$1.00, postpaid.

It covers buildings and walls with a perfect mat of dark green leathery foliage, which changes to brilliant crimson as fall approaches. Clings to either tree or wood without support.

English Ivy—A splendid evergreen climber, with dark glossy green leaves; clings firmly to stone, brick or wood walls without trellis or support; very desirable. **15c each; 4 for 50c.**

New Coral Clematis, Clematis Coccinea—A handsome climber with a profusion of bright, coral-red flowers in constant bloom. **Price: 35c each; 3 for \$1.00, postpaid.**

8 POPULAR SET OF CHRYSANTHEMUMS 75¢

**Large Flowering Varieties
Strong Pot Plants**

All will bloom this season

Silver Sheen—White. **Harvard**—Crimson.
Pink Chieftan. **Gladys Pearson**—
Mrs. H. C. Kidder—Bronze.
Yellow. **Oak Leaf**—Bronze.
Pink Frick—Pink. **Sun Glow**—Yellow.

SPECIAL OFFER—One each of the eight beautiful "Mums" described above, post-paid, for 75c. Please order as "Popular Set."

New York—There are Rose bushes at my girlhood home that were purchased of you at least 40 years ago still blooming.—Mrs. H. C. Y., Sunapee.

House Ferns



Beautiful Verona or Lace-Type Fern

DINGEE MAGNIFICENT CARNATIONS

We offer strong plants, and whether planted in the open ground or in pots, they quickly make large specimens, blooming profusely during the summer. For winter blooming pinch the plants back from time to time during the summer. Bring indoors in early fall. Grown in pots they will bloom abundantly during the winter giving you flowers the equal of those sold at \$2 and \$3 per dozen in florists' shops.

Price strong pot plants: 15c each, any 2 for 25c, any 4 for 50c; \$1.25 per dozen, postpaid.

Aviator—Best standard crimson.

Harvester—Superb pure white.

Pink Enchantress—Large, deep pink.

Radium—Beautiful red, fine large bloom.

Golden Glow—Fine bright yellow.

Cheerful—Deep pink, large flowers.

Arctic—Fine white, large flowering.

Ivory—Beautiful creamy white.

HERBACEOUS HYDRANGEAS

Excellent for pot culture for blooming indoors during the winter. The foliage keeps dark green throughout the winter, making them an ideal decorative plant. They can also be planted outdoors, as they are hardy.

Otaksa—Rich pink, changing to white and blue.

Splendens—Clear red.

Trophee—Watermelon red blooms.

Gertrude Glahn—Deep rose.

Souv. de M. Chautard—Deep rose pink.

Deutschland—Salmon pink.

Price: 25c each, Large specimen plants in 6 inch pots, 75c each.

STIM-U-PLANT TABLETS

An excellent fertilizer for any purpose is Stim-U-Plant Tablets, an odorless, highly concentrated plant food, in tablet form, with guaranteed chemical analysis of 11 per cent nitrogen, 12 per cent phosphoric acid, 15 per cent potash.

Prices, postpaid: Small size, 30c; 100 tablets, 80c; 1000 tablets, \$3.75.

Very likely you have admired a friend's house ferns? Why not have some of your own? Nothing so cheap, growing more beautiful from year to year. They last a life time. We marvel why they are not in every home. Not one fern but in every room. Fair, good, loose soil, partial sun-shine, living room temperature and loving care is all that is required.

Plant at least 2 or 3 of the first size in a pot or crock, 4 to 5 inches across, or one large plant, then move into larger containers when necessary.

Brighten your home with these lovely ferns, now cheap in price. In a year or two no amount of money could buy them from you. Order several while the price is down.

Price of all Ferns in extra strong pot plants, 15c each; 4 for 50c; large plants from 4 and 5 inch pots, 75c each, postpaid.

Teddy, Jr.—New dwarf Fern. Fronds are broad and beautifully tapered from the base to the tip, drooping just enough to make a graceful plant.

Roosevelt—Resembles the Boston Fern, but produces many more fronds, thus making a handsomer and bushier plant.

Boston Fern—This fern differs from the ordinary Sword Fern in having much longer fronds. This drooping habit adapts this variety for growing as a single specimen for a table or pedestal.

Dwarf Boston—Same as Boston variety but a dwarf compact plant.

Verona—The fronds are very fine and fluffy. Known as Lace or Baby Breath Fern. Dwarf or compact growth.

Maidenhair Fern (*Adiantum cuneatum*)—The best known table Fern, with dainty, lacy fronds, unlike any other.

Scholzei (The Crested Fern)—The fronds, like *Scottii*, stand erect, and with a graceful arch form a plant of ideal shape, and they never break down.

BARGAIN PRICES—Why run any risk. 40 years experience and low prices. Satisfaction Guaranteed. Postage paid always. Satisfaction and safe arrival any place in U. S. A. guaranteed.



Dingee Carnations

Dingee Hardy Shrubs

HILLS OF SNOW OR EVERBLOOMING HYDRANGEA

This new Everblooming Hydrangea is as its name implies, constantly in bloom from early in June until frost, and is one of the most important additions in the way of hardy shrubs ever introduced. All summer long it bears great clusters of white flowers, much like the tender Hydrangea in size and form; it will grow to perfection in partial shade, making it most valuable for massing under trees or growing on north side of house. Hardy everywhere. Plant at least a half dozen plants. The effect is lovely.

SPIREA-MEADOW SWEET

Billardi—Spikes of rose-colored flowers; blooms profusely. **Prunifolia (Bridal Wreath)**—Double pure white flowers.

Van Houtte—The bushes form fine, compact clumps. The pure white flowers are borne in great masses.

Perpetual Blooming Crimson Spirea, Anthony Waterer—It makes a low compact bush, 15 to 18 inches high. Large umbels of deep crimson flowers.

HARDY AZALEA HINODEGIRI

Among the most gorgeous of all hardy shrubs, bearing large flowers of fine shape. The beautiful color makes an attractive showing when in bloom in early spring. The bush is just one mass of flowers. Evergreen and entirely hardy. Dwarf grower, making a bush in time of from 12 to 24 inches high and about the same in diameter. Flowers bright scarlet. Strong potted plants from 8 to 12 inches, 75c each, postpaid.



Hills of Snow

EVERGREEN BOXWOOD

Dwarf evergreen boxwood for edging walks, flower beds, etc. May be kept trimmed to any shape or height desired and always green. We offer the two varieties. The old English Box, *Sempervirens Suffruticosa* and the *Buxus Sempervirens* or the more robust growing boxwood. We offer strong specimen plants 12 to 18 inches field grown. \$1.00 each, \$5 per doz., postpaid.

WEIGELA

Floribunda—6 to 8 feet. Erect grower. Beautiful red flowers. **Rosea**—Large deep rose. **Eva Rathke**—Reddish purple. **Amabilis**—4 to 6 ft. Deep rose colored flowers. **Mad. Lemoine**—4 to 6 ft. White flowers with delicate blush.

Hardy Azalea



Price of all hardy shrubs on this page, except where otherwise noted: one year, field plants, 20c each; 6 for \$1.00, postpaid; two year old size, 50c each; 3 for \$1.40; postpaid; three year old size, 75c each; 3 for \$2.00, by freight or express not prepaid.

HYDRANGEA PANICULATA GRANDIFLORA

They are extensively used for yard, lawn and hedge planting and for screens. Attains a height of 5 to 7 feet; hardy in all localities; blooms the first and every season in July and August. The flowers are massive, cone-shaped often measuring 10 inches in length, and have a pleasing variation in color, changing from original pure white to pink, and finally to beautiful, rich, coppery-red.

DOUBLE JAPAN SNOWBALL

Viburnum Plicatum—Blooms in early June, when the whole bush is loaded down with great compact balls of pure white, double flowers. They are borne in such profusion that the entire plant appears one dense mass of bloom; the tree grows erect and bushy, 6 to 8 feet high.

PHILADELPHUS OR MOCK ORANGE

Bouquet Blanc—Dwarf growth with long slender branches densely covered from base to top with sweet-scented double flowers of creamy-white. In fact the flowers are borne in such great profusion as to totally obscure the plant.

New Philadelphia ("Virginal")—One of the most beautiful, new ever-blooming varieties. It also makes wonderful individual specimen plants on the lawn. A vigorous tall grower with very large double-crested flowers with round petals.

SWEET-SCENTED SHRUB

Calycanthus Floridus, Carolina Allspice—3 to 6 feet. Flowers dark reddish brown and very fragrant and borne freely.



Hydrangea Pan. Grand.

HARDY PERENNIAL PHLOX

Price Strong field plants, 25c each, 5 for \$1.00

Beacon—Brilliant cherry red. 36 inches.
Elizabeth Campbell—Light salmon pink.
Mrs. Jenkins—Pure white. Late flowering.
Rheinlander—Beautiful salmon pink.
R. P. Struthers—Red, shaded salmon.
Gen. Van Heutz—Salmon red, white eye.
Griseur—Deep rose.

Sunset—Dark rosy pink.
W. C. Eagan—Lilac pink, rosy center.
Eclairer—Purplish crimson light center.
Mrs. Chas. Door—Beautiful lavender.
Isabey—Salmon pink.
Mixed varieties, 2 for 25c; 9 for \$1.00 postpaid.



Phlox, Beacon

HARDY PERENNIALS

Aquilegia (Columbine)—Remarkably graceful and beautiful perennials, noteworthy for the charm of their flowers. Few hardy plants can excel them in beauty. The several strains of hybrids offered surpass them all in beauty of form, delicacy and richness of color.

Gaillardia Grandiflora (Blanket Flower)—One of the showiest of all hardy plants growing 2 feet high and succeeding in any soil if the position is sunny. They start blooming in June. Shades of red and gold in wonderful combinations.

Delphinium Belladonna—This is the freest and most continuous blooming Hardy Larkspur. Clear turquoise blue.

Delphinium Bellamosa—This is a rich, deep blue form of the popular light blue Belladonna.

Canterbury Bells (Cup and Saucer)—Tall, erect growing plants completely covered with large cup and saucer-shaped flowers during late May and June. One of the loveliest of biennials and a perfect plant for the old-fashioned, hardy garden. Flowers last a week or more when cut.

Yucca Filamentosa (Spanish Bayonet)—A low-growing evergreen plant with narrow leaves. The flower stalk is from 2 to 4 feet high and rises from the center. Creamy white, bell-shaped flowers.

Funkia Subcordata Grandiflora (Day Lily)—White Day Lily. Handsome spikes of large, waxy-like blossoms, with an odor like that of orange blossoms, and large, broad, glossy, light-green foliage. One foot to 18 inches.

Rudbeckia (Golden Glow)—Grows 6 to 8 feet high, branching freely and bearing by the hundreds on long graceful stems exquisite double flowers of golden yellow.

Price: of all Hardy Perennials on this page, except where noted: Strong field plants, ready to plant any time, 20c each; any 5 for \$1.00, postpaid, of one or more varieties.

LEADING DAHLIAS

The splendid qualities and gorgeous beauty of the present-day Dahlia have won for it a place at the head of the most important garden plants. None are easier to grow, respond more readily to care and attention, or flower more freely. Few cultivated plants have a wider range of color. The brilliant shades and the free, fluffy, Chrysanthemum-like form of its flowers make an enchanting spectacle which never fails to attract attention. We offer the cream of world's production. All prices postpaid.

LARGE FLOWERING DECORATIVE TYPE

Kemp's Violet Wonder—The very large flowers are a bright purplish violet, that appeals to all immediately. \$1.00 each.
Jim Moore—Primrose-yellow, shading to gold. \$1.00 each.
Mrs. Edna B. Champlin—Deep Rhodamine pink. Very large. \$1.00 each.
Rocky Ledge—One of the best yellows grown. \$1.00 each.
Hawaiian Night—A large bright deep red with a yellow cast \$1.50 each.

Special Offer—One each of above 5 Splendid New Varieties for \$4.50.

Kathleen Norris—A true rose pink. One of the best. Large handsome bloom. 50c each.

Margaret K. Alexander—Large fine bloom of buff and burnt orange. 50c each.

Jane Cowl—Blossoms combine lovely shades of bronzy buff and old gold. 50c each.

Alma Alexander—Deep orange. 50c each.

Coquette—One of the most beautiful red and gold combinations. Fine large flower. 50c each.

Special Offer—One each of above 5 varieties for \$2.00.

Jersey Beauty—One of the finest true pink varieties. 25c each.

Mrs. Ida de Ver Warner—An old favorite but still one of the most popular. Vigorous growth. Charming soft purplish lilac. 30c each.

Avalon—Large well shaped bloom of a clear pure yellow. 25c each.

Margaret W. Wilson—Great size and beauty. Opalescent pink. 25c each.

Pride of California—Large handsome crimson red. 25c each.

Special Offer—One each of above 5 varieties sent for \$1.00.

Fine Selection of Mixed Sorts, 6 for 50c.

Penna.—My Roses last winter froze severely and where I have own root plants they still are, but where they were budded, they passed on.—Mrs. H. B. S., Elizabeth-town.

Virginia—Please send me your catalog. I have bought Roses of you for 35 years and there are none better. I won the blue ribbon from the Charles Dings at the Garden Club Flower Show.—Mrs. E. Q. R., Fredricksburg.



Mrs. Ida de Ver Warner Dahlia

SPECIAL BARGAIN OFFERS



A Sturdy First Size own root Rose Plant

“A TRIAL OFFER”

8 Superb, Hardy, Free Blooming Varieties Postpaid For \$1.00

Our great stock of Roses, the largest in America, contains many very fine varieties which our catalog does not describe in detail, every way the equal, if not superior, to the popular favorites. We want you to know these Roses as we do, hence we make this remarkable offer. If you will send us \$1.00 we will forward eight of them, all different kinds, no two alike, properly labeled, postpaid and safe arrival guaranteed in U. S. A.

8 Rose Plants \$1.00 Postpaid

You will not be disappointed in these Roses, take our word for it. Some will bloom this year throughout the season and will continue each succeeding year to bloom more profusely and be a source of joy forever. We will include in this collection such magnificent Roses as Paul's Scarlet Climber, Vivid Scarlet, shaded slightly crimson.

ALEXANDER HILL GRAY. Gorgeous yellow bush rose illustrated in natural colors elsewhere. Free blooming. Note description in "Guide."

Order at your convenience and plants will be reserved for you and sent when you desire or immediately.

5 POPULAR COCHET ROSES—95c

FAMOUS DINGEE OWN ROOT POTTED PLANTS

If you want five of the finest Roses listed in this book, which will produce hundreds of superb flowers throughout the growing season, producing the kind of flowers one never tires of, order this Cochet set. No matter where you live, they will give you perfect satisfaction. The Cochet Roses are perfectly hardy in every part of the country, even where the winters are most severe, with slight protection. In the more temperate sections and in the South they thrive vigorously and bloom most lavishly all summer long, growing into great, strong, lusty bushes, which increase in beauty each year.

Pink Maman Cochet—The Queen of all Pink Garden Roses. The buds are large, full and firm, elegantly pointed, showing depth and richness as they expand. The superb flowers open perfectly double, are extra large and of splendid substance.

Red Maman Cochet—A Rose that will grow and give satisfaction in almost any soil or situation. It produces flowers in amazing profusion, on long, strong shoots. The flowers are very full, perfectly double; buds long and pointed. Color, warm, rosy crimson.

Yellow Maman Cochet—One of the best hardy, everblooming yellow Roses. It is ideal for open ground culture—a typical Cochet Rose, with gracefully molded buds, flowers, magnificent when open, on stiff, strong stems.

Crimson Maman Cochet—The color is a new and clear shade of red or velvety crimson, brightening in the center; of exquisite fragrance.

White Maman Cochet—A most magnificent snow-white Rose, with sometimes a faint tinge of pale blush.

SPECIAL OFFER

One each of Pink, White, Red, Yellow and Crimson Cochet, strong plants, postpaid, 95c; two year old plants, one of each, 5 in all, \$2.85 by Parcel Post Prepaid with soil on roots. Still larger size or specimen plants for \$4.00 of the 5 Cochets by Parcel Post Prepaid.

The Dingee & Conard Co.

My mother for years bought Roses from you, and I from time to time have bought from you. I have Roses which came from your nursery 35 to 40 years ago, and though for the first time in my memory they died to the ground last winter, every one put out from the roots and have bloomed as lovely as ever.

Mrs. H. T. Louthan, Virginia, Oct. 1, 1934

The Dingee & Conard Co.

I want to express my appreciation for the Rose bushes you sent us. We got your Trial Offer first year own root Roses. They were mis-sent in the mail and were over two weeks on the way. When they arrived they appeared dried out. We planted them and every one of them would have bloomed if we had let them. Now they are real strong plants. We sure are pleased with them.

Sincerely,

Mrs. Leslie Gibbard, Canada, Feb. 8, 1935

THE DINGEE & CONARD CO., WEST GROVE, PA.

Established 1850 THE PIONEER ROSE GROWERS OF AMERICA Incorporated 1871

Send by..... When to Ship.....

Date _____ 1936

Amount Enclosed \$ _____

Remit by Post Office or Express Order, Personal Check, Bank Draft or Registered Letter at our risk.

Stamps accepted for small amounts.

Name.....

P. O. Box. Street or Rural Delivery.....

Post Office.....

County.....; State.....

Quantity	Names of Roses, Plants, Seeds or Bulbs Wanted	Size	Dollars	Cents

Please Note All orders will be forwarded as soon as possible after their receipt, unless we are instructed to hold them. **STATE DISTINCTLY, IF YOU DO NOT WANT THE GOODS SENT IMMEDIATELY**, whether by mail or express, and when you want them shipped, otherwise they will be sent an once.

Quantity	Names of Roses, Plants, Seeds or Bulbs Wanted	Size	Dollars	Cents
Amount Brought Forward				

Buying from us by mail is made easy. If it is not convenient for you to send a Post Office Money Order or Check with the order, we will gladly send the goods by Parcel Post, C. O. D. Just pay the postman when goods arrive.
 We guarantee safe delivery to your door.

DESIRABLE PLANTS FREE

If your order amounts to \$2.50 you may select any one of the plants listed below. If it amounts to \$3.00 you may have any Two. If it amounts to \$4.00 you may have any Three, and with an order of \$5.00 or more you may have any Four. You must ask for them when sending your order. All strong first size pot plants.

- Alexander Hill Gray. Splendid Everblooming hardy yellow Garden Rose.
- Pauls Scarlet Climber. Most popular cardinal climber.
- Hardy Chrysanthemum, any variey offered in catalog.
- Everblooming Canna. Standard kind.

If You Have a Friend Whom You Think Would Like a Copy of "OUR NEW GUIDE TO ROSE CULTURE," Write Their Names Here and Return to Us and We will be Glad to Send Copies.

SPECIAL BARGAIN OFFERS

10 Famous Dingee Roses \$1.50

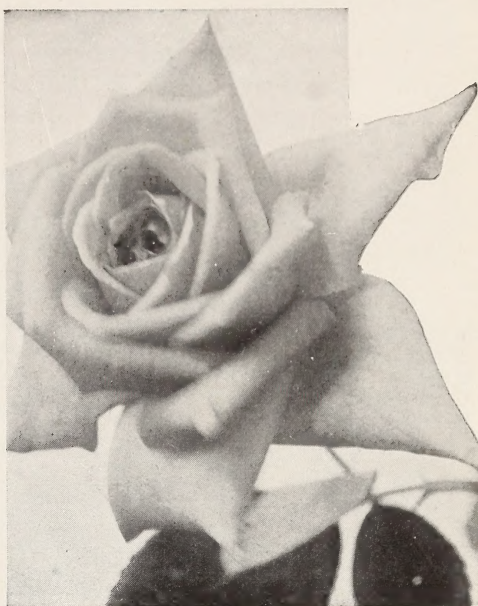
Postpaid with Safe Arrival Guaranteed in U.S.A.

Every year we receive many letters asking us to name a collection of Roses—the best kind for general home culture. In our vast collection the ten varieties named below are, in our opinion, among the best garden Roses for all sections of the country. Hardiness, vigorous growth, freedom of bloom, color and beauty of flower make them the best collection for amateur planting. All labeled.

“Dingee Collection”

Charles Dingee—Flesh pink.
Pink Maman Cochet—Clear pink.
White Maman Cochet—White.
Paul's Scarlet Climber—Cardinal.
Alexander Hill Gray—Yellow.
Kootenay—Creamy white.
Keystone—Everblooming yellow climber.
Crimson Beauty—Velvety crimson.
Baby Doll—Dwarf pink and yellow.
Garden Gem—Everblooming deep pink.

SPECIAL OFFER: This entire collection of 10 Magnificent Dingee Roses in strong one year old plants or first size, for \$1.50 postpaid; two year old plants by Parcel Post with some soil on their roots, for \$5.00.



Our Great Rose “Charles Dingee”

Seven Garden Set \$1.00

7 Hardy Everblooming Roses, Postpaid

Briarcliff—Silver pink.
Marie Guillot—Pure white.
Crimson Queen—Velvety crimson.
Marie Van Houtte—Canary yellow.
Pink Maman Cochet—Pink.
White Maman Cochet—White.
Alexander Hill Gray—Lemon yellow.

SPECIAL OFFER—One each, strong plants, 7 Garden Roses described above, sent postpaid, for \$1; the seven in two year old plants, for \$3.50, by parcel post prepaid with some soil on roots. Please order as “Garden” Set.

The Favorite Collection

10 Hardy Free Blooming Climbing Roses \$1.25

Hardy Climbing Roses are so necessary to the beautifying of any home that it is almost impossible to make any place attractive without them. No matter where you go the most attractive places are those where climbing Roses have been planted freely and they stand out so beautifully above others that we cannot help but notice them. They also answer the purpose of a hedge if given support like a wire fence, or they can be planted same as any other Rose, as specimen plants, if kept properly trimmed, they make a handsome bush.

10 FOR \$1.25 POSTPAID

For \$1.25 we will send you ten of these Hardy Free Blooming Climbing Roses. Each one different and labeled. All leading kinds as well as some of the New Ones, our Selection. You will not be disappointed in them, take our word for it. Safe delivery guaranteed in U. S. A. Order as “Favorite Collection.”

“Favorite Collection” of Climbing Roses in two year old plants sent by express for \$5.00 postpaid.

Double Peony Collection

2 Year Old Roots, 3 for \$1.00, Postpaid

Secure the plants early. You cannot fail with them. Bloom each and every season without fail.

For \$1.00 we will send you 3 strong roots, 3 different colors, White, Pink and Red. Worth many times the price. Order as the “Peony Collection.”

5 Hydrangea Collection \$1

OF DINGEE HARDY SHRUBS, POSTPAID

Hardy shrubs can be successfully planted in the spring. Plant them anywhere and they soon make a grand display. No yard complete without them.

One each of the following popular varieties.

- 1 Everblooming Hydrangea, white.
- 1 Fall Blooming Hydrangea, pink.
- 1 Double Japan Snowball, white.
- 1 Spirea Bridal Wreath, white.
- 1 Weigela, pink.

Order as the “Hydrangea Collection”

The same 5 varieties in strong 2 year old field plants, sent postpaid for \$2.50.



Red Radiance



Talisman



Garden Gem



White Cochet

Great "Radiance Set"
The Best Everblooming Bush Roses

10 FINEST, HARDY DINGEE ROSES \$1.75

These are the best of all Roses for the beginners. Wonderful blooms produced continuously. Long pointed buds, full double blooms. Hardy and healthy. "Radiance Set." 10 Famous Dingee Hybrid Tea Own Root Roses, \$1.75 Postpaid.

RADIANCE—One of the best outdoor Roses. Color richest carmine red.

FRANCIS SCOTT KEY—The finest double red outdoor Rose. Quite hardy.

RED RADIANCE—A remarkable rose. Splendid even shade of clear red.

ETOILE DE HOLLAND—Brilliant red blooms of magnificent size.

TALISMAN—Buds are handsome. Mixture of orange, yellow and red.

GARDEN GEM—"Dingee Rose." Satiny pink. Magnificent bud, full double bloom. Strong grower, everblooming.

MME. BUTTERFLY—Buds lovely shade of Indian Oak with a yellow tint at base. Perfect form; richly perfumed.

MRS. HENRY MORSE—Two tones of pink with an underlying yellow glow.

WHITE MAMAN COCHET—A magnificent snow-white Rose with a faint tinge of pale blush. Best white for open ground culture.

JOANNA HILL—Healthy, constant blooming. Long buds, immense, double flowers. Deep yellow, base of petals deep orange. Exquisite. Fragrant.

For \$1.75 we send postpaid one each, these superb Hybrid Tea Roses, all leaders, in first size plants. In large two year old size, one each by Parcel Post Prepaid for \$5.50. Extra heavy Star Size plants, the 10 for \$8.50, postpaid. Sent with some soil on roots.



Mme. Butterfly



Joanna Hill



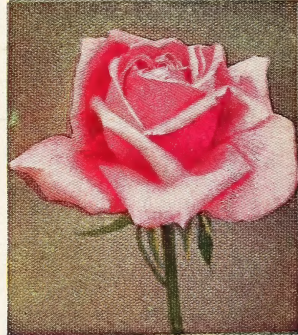
Francis Scott Key



Pink Radiance



Etoile de Holland



Mrs. Henry Morse

The Dingee & Conard Co., West Grove, Penna.